

# THE 2015 FASHION

# SHOW

**Thursday • April 9 • 2015**

River Rock Show Theatre  
8811 River Road, Richmond BC

**Matinee: \$18** - 1pm (Doors open at 12:30pm)

**Evening: \$38** - 7pm (Doors open at 6:30pm)

Group pricing available • All ages welcome

**Tickets: [kpu.ca/2015fashionshow](http://kpu.ca/2015fashionshow)**



**KWANTLEN POLYTECHNIC UNIVERSITY**  
Chip and Shannon Wilson School of Design

PRESENTED BY

**TAMODA**  
apparel inc.

PLATINUM SPONSOR

**RICHMOND**  
CENTRE

GOLD SPONSOR



BRONZE SPONSORS



**envision**  
PRODUCTION

*Painted Pink*  
Production Inc.

**sodexo**  
Making every day a better day

**Suki's**  
Asian • Japanese

MEDIA SPONSORS



# CLASS OF 2015



Emily Barber



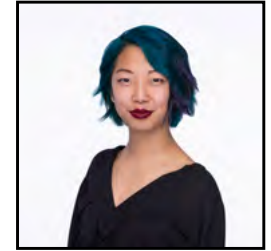
Cassandra Bucholtz



Catherine Chan



Dishna Chan



Yng Chern



Karen Faint



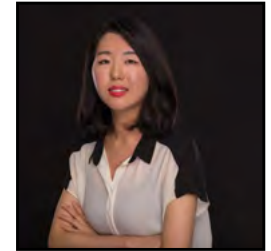
Sofi Fiorentino



Tyler Froese



Rosanna Fung



Grace Han



Bianca Hartle



Olivia Hayward

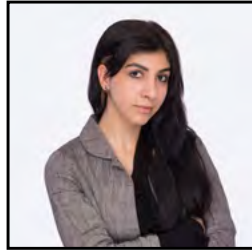


Charity Hu

# CLASS OF 2015



Angela Huang



Negin Izad



Kaitlyn Jung



Deanna Kadota



Rae Kerzner



James Knipe



Alice Lam



Michelle Larsen



Jessica Lee



Michelle Leung



Jessica Lewthwaite



Eugenie Lin



Blair MacDonald

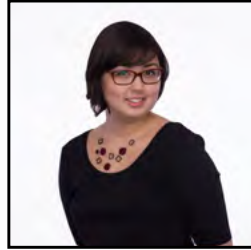
# CLASS OF 2015



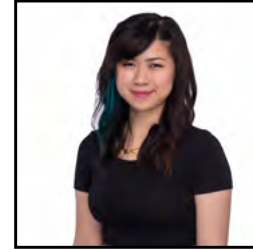
Denise Mok



Chelsea Nielson



Devon Okamoto



Fiona Pang



Gurit Parmar



Kimberly Parker



Capri Philip



Laura Psutka



Karley Scovell



Lisa Siperko



Lydia Waiz



Amy Wan



Jennifer Wilson

# EMILY BARBER

Growing up in the wilderness of the Kootenays and spending the majority of her life traveling, Emily has been greatly inspired by the outdoors and nature. While also fostering a love for textile design and natural dyes; Emily wanted to connect her final line with her love of natural dyes, the arts, and nature to create her artisanal based final collection, Minke&Roux. Emily wants to inspire the slow living lifestyle she was raised in by creating a collection that fosters connectedness through her garments. Emily has found comfort and skill in both the creative and technical aspects of the fashion industry. Later, Emily plans on impacting students by continuing her education and later teaching her love of production and sustainability within the fashion industry.

[emilykatiebarber@yahoo.com](mailto:emilykatiebarber@yahoo.com)

*Minke & Roux*





*Minke & Roux*

*Designer: EMILY BARBER*

Minke & Roux is an artisanal-based, slow-living collection for women of all sizes. We create a community of respect by offering ethical, handmade clothing using natural dyes and natural fibers. Minke & Roux strives to break down the division between regular and plus sizing and create a community of respect for both our bodies and the environment around us. Minke & Roux's clothing is locally made, artistic, and ignites the customer with a connection to nature, the arts, and their community. Using fibers like Silk, Wool, and Linen, Minke & Roux hand-dyes each garment using natural dyes. Each garment is hand-painted and hand-embellished before it makes its way to our customers to last them throughout each stages in their life, being passed down through generations. Minke & Roux inspires their customers to use clothing as a way to connect with the world around them.

Model: Karen Faint  
Makeup/Hair: Emily Barber  
Photography: Emily Barber  
Styling: Emily Barber

THE SHOW 2015

[More Info.](#)

[BACK TO DESIGNERS](#)

# CASSANDRA BUCHOLTZ

The idea of creating something new from reclaimed materials, as well as working with natural fabrics is what most inspires Cassandra throughout her pursuit in design. Deconstructing unloved garments and turning them into something beautiful is a constant source of inspiration, along with a love for past eras; specifically the 1930s and 1940s. She looks to reduce the amount of mass consumption by making one-of-a-kind pieces that can be worn and loved on a daily basis. She believes that clothing should be about creating a connection between the consumers and the designer and sustaining an appreciation for thoughtful design. Cassandra plans to travel and continue working on her line while she gains experience working in the industry after graduation.

[cassandra\\_bucholtz31@hotmail.com](mailto:cassandra_bucholtz31@hotmail.com)  
[cassandrabucholtz.com](http://cassandrabucholtz.com)

THE POETRY OF CLOTH.





# THE POETRY OF CLOTH.

SPRING/SUMMER 2016

Designer: CASSIE BUCHOLTZ

The Poetry of Cloth signifies an appreciation for uniqueness and for the time spent on finishing each garment; it is a want for a connection to the piece you choose to wear; the ability to have the garment surpass seasonal trends and to live with you throughout your life. All the garments in every collection are made locally by hand with care and consideration to detail, finishing and fit. The inspirations for all the collections are derived from past eras, as well from the new and reclaimed materials that are sourced every season. It is clothing that can hold stories and inspire one to embrace their individuality.

THE SHOW 2015

[More Info.](#)

Model: Caprice Rutherford

MUA: Miranda Raye

Photography: Michaeline Moore

[BACK TO DESIGNERS](#)



# CATHERINE CHAN

Catherine values process just as much as a clean final product. She started out by fixing clothes and reimagining their design. She learned that sewing takes attention to detail and constant decision making. Soon, she discovered out how rewarding it is to make something yourself and fix something yourself.

[cn.catherine@yahoo.ca](mailto:cn.catherine@yahoo.ca)  
[studiocchan.com](http://studiocchan.com)

DYNAMIC METHOD





# DYNAMIC METHOD

SPRING 2016

Designer: CATHERINE CHAN

Dynamic Method represents Catherine's experiences, values, and skills as a designer. Dynamic: (dahy-nam-ik) continuous change, activity, and progress. Method: (meth-uh d) orderliness of thought and action. Dynamic Method offers discreet surprises, clean appearance, considerate functionality, and multi-purpose use. Like Catherine, Dynamic Method values thoughtful design that is high quality and mindful.

THE SHOW 2015  
[More Info.](#)

[BACK TO DESIGNERS](#)

Model: Mike Majeski  
Photography: Catherine Chan

# DISHNA CHAN

With her family consisting of three children, Dishna Chan's mother used to sew up outfits for them. Observing her mother's talent, Dishna gained interest in fashion design. In high school, she decided to learn how to sew in her first home economics class and it became one of her best subjects at school. Dishna discovered that Kwantlen has a program for fashion, design, and technology, which is a combination of her interests, and decided to develop her skills further with this program. Four years later into the program, she is still enjoying the processes of learning and applying the range of skills for making clothes. Dishna's education led her to believe in fulfilling the specific needs of others are always possible with appealing designs. Dishna's fourth year at Kwantlen has allowed her to demonstrate her independence by gathering niche market research and go through the entire design process in depth to create suitable and feasible designs and for the niche market.

dishnachan@gmail.com

a e s · t h e t e





# a e s · t h e t e

SPRING/SUMMER 2016

Designer: DISHNA CHAN

Catering to 35 - 45 year old female professionals, a e s · t h e t e designs business casual clothing for aesthetic enthusiasts who desires to express their interest in arts and culture. The designs focus on integrating traditional Chinese styles into modern apparel with quality, comfort, timelessness, and versatility. The company is inspired by the city of Vancouver through the designer's perspective of how the city fosters multiculturalism. The theme of a e s · t h e t e's Spring/ Summer 2016 collection is inspired by the stimulation of visiting a fresh spring garden. Focusing on day-to-day wear at and after work, the collection features pieces that are easily coordinated with style and colors. Soft spring colors, subtle abstract patterns, and neutral colors were chosen to portray the style and professionalism of the wearer. The delicate fabrics of the collection channel the essence of tradition and modernism. a e s · t h e t e's objective is to contribute diversity in style for the arts and culture community.

THE SHOW 2015

[More Info.](#)

[BACK TO DESIGNERS](#)

Model: Cara Halseth

Photography: Dishna Chan

# YNG CHERN

Yng's design philosophy didn't start to develop until she spent a semester abroad in Finland, where she learned to appreciate the ethical, and social aspects of the fashion industry. After graduation, Yng plans to continue developing her knowledge of ethical and social issues in the industry.

[yng.chern@gmail.com](mailto:yng.chern@gmail.com)

**KAI**





# KAI

*FALL/WINTER 2016*  
*Designer: YNG CHERN*

Kai makes apparel for adventuring women who are seeking apparel that is supreme in fit and function. Straying away from the commotion of fads, these women are seeking products that fit, last and function like outdoors apparel should.

Model: Parmis Bassir  
Photography & Editing:  
Kathleen Loski

THE SHOW 2015

[More Info.](#)

[BACK TO DESIGNERS](#)

# KAREN FAINT

Karen's creativity and drive in the industry originates from the feeling of inspiration. Striking images, captivating quotes, and unparalleled beauty stimulate her love for design and fashion, which is her driving energy. Karen plans on using this energy to pursue a career in the apparel industry, in production and manufacturing.

[knfaint@gmail.com](mailto:knfaint@gmail.com)

OLIVER MOWAT





# OLIVER MOWAT

*SPRING 2016*  
*Designer: KAREN FAINT*

Oliver Mowat is a menswear line designed specifically for working professions who are 6'0" - 6'8". With a timeless classic aesthetic and focus on fit, fabrication, and detailing, Oliver Mowat creates clothing for the man that people look up to.

Model: Brian Faint  
Photography: Grant Faint  
Styling: Karen Faint

THE SHOW 2015  
[More Info.](#)

[BACK TO DESIGNERS](#)



# SOFIA FIORENTINO

Design offers the possibility of creating aesthetically pleasing and functional work; a reflection of the views of its creator. Originally from Buenos Aires, Sofia is inspired by sources of creative stimuli and human connection. She believes in creating awareness and rethinking consumption.

sofiafiorentinodesign@gmail.com  
sofiafiorentino.com





# NO PARADIGM

*Designer: SOFIA FIORENTINO*

No Paradigm is a genderless clothing line, a reflection of a paradigm shift based on removing boundaries. The pieces are versatile, universal in gender and made to change with the wearer, featuring all natural fibers and hand applied surface design. This line explores the currently blurred line between genders through clothing and how letting go of antiquated gender binaries helps us build a better community and ultimately become a more sustainable society.

Model: Hailey Poole

Makeup/Hair: Rachel Samson

Photography: Sansitny Ruth

THE SHOW 2015

[More Info.](#)

[BACK TO DESIGNERS](#)

# TYLER FROESE

Creative problem solving is the aspect of design that drew Tyler into fashion design while he was still working in industrial construction. Creatively solving design problems is the overlapping theme between his past in construction, his current education and his current job as a bag designer. Tyler draws his inspiration from the balance between minimal design and functionality.

[tyler@nocturnalworkshop.com](mailto:tyler@nocturnalworkshop.com)

BRIDGE FINE GOODS





# BRIDGE FINE GOODS

*FALL/WINTER 2016*  
*Designer: TYLER FROESE*

Bridge Fine Goods is a Vancouver made and manufactured collection that contrasts the use of storytelling textiles with technical articulation. The collection's priority is to choose materials that age with the experiences of the wearer to become more beautiful while offering unparalleled fit.

Model: Sei Cambell  
Photography: Black Ponto  
Styling: Tyler Froese

THE SHOW 2015  
[More Info.](#)

[BACK TO DESIGNERS](#)

# ROSANNA FUNG

Born and in raised in Vancouver, Fung has always been creatively focused with a love for fashion that came naturally at a very young age. Empowered by detailed craft, Rosanna designs quality original clothing. The evolving trends of street fashion and social media continue to stimulate creativity in her designs. Inspired by the ethical and technical beauty of clothing, Rosanna plans to delve further into the local industry in Vancouver after graduation in the design field for causal technical wear.

[rosanna.yy.fung@gmail.com](mailto:rosanna.yy.fung@gmail.com)  
[ca.linkedin.com/pub/rosanna-fung/58/17/412/en](https://ca.linkedin.com/pub/rosanna-fung/58/17/412/en)

**THEOREM**





# THEOREM

SPRING 2016

Designer: ROSANNA FUNG

Taking design details to new heights, Rosanna Fung's Theorem presents a collection with the bold and street-savvy man in mind. Her love of design and circle of friends and creative-alike gave her the push to create Theorem. Gone are the traditional cuts and monotonous fabrics seen all over this city - Fung pushes to blend avant-garde with street wear that is both wearable and comfortable. Fung's line targets men that share a similar love for creativity and want a way to express that they are both confident and open-minded. Theorem is a luxury menswear brand infused with the best of creative street wear. Theorem offers a luxe line of art infused garments for men 25-39. Our clothing expresses creativity without compromising quality. We aim to stand out using gold exposed metal zippers and illustrator generated custom vinyl artwork create a strong statement in the collection. Our line has guys stepping slightly out of their comfort zone but it's the dope details and fit that will win them over.

Model: Dom Tinh  
Photography: Ryan Chin  
Styling: Tyler Kong

THE SHOW 2015  
[More Info.](#)

[BACK TO DESIGNERS](#)

# GRACE HAN

Moving from South Korea to Canada strengthened Grace's ability to adapt and learn quickly to new cultures. Influenced by sleek, modern designs in the Korean fashion, Grace is inspired to create a timeless contemporary collection for tall business women. She believes in celebrating the accomplishment of work through a lifestyle, emphasizing personal growth.

[grace.han100192@gmail.com](mailto:grace.han100192@gmail.com)

# AVISE





# AVISE

FALL/WINTER 2015  
*Designer: GRACE HAN*

Avise provides a refined, contemporary professional attire that emphasizes sleek simplicity and quality for sophisticated tall business women from age 35 to 55 who are above 5.8". Focused on sleek, minimalistic designs, Avise delivers functional, overstated pieces that can be worn at the office and in the city and embody the correct proportions, promoting the physique of a tall woman. Avise believes in inspiring and connecting with tall business women, focused on celebrating the accomplishment of women through a lifestyle, emphasizing personal growth and offering social benefits that support her promoting the importance of her role in business through our products.

THE SHOW 2015

[More Info.](#)

[BACK TO DESIGNERS](#)

Model: Danijela Vasil

Makeup/Hair: Lailaa

Photography: Alecia Mantei



# BIANCA HARTLE

Bianca's drive to design and create stems from an early interest in the fashion industry . Her desire for the industry grew as she attended KPU, Parsons New School of Design and while working for a global company. Bianca plans to further advance her design skills at a local company.

biancahartle@gmail.com  
biancahartle.com  
@vitabici

**VITA  BICI**





# VITA BICI

SPRING 2016

*Designer: BIANCA HARTLE*

Vita Bici offers apparel for the passionate female motorcyclist who wants to look as sexy and sophisticated as she feels on her bike. The feminine fit and designs are inspired by European fashions and classic moto styling. Vita Bici ensures all garments provide industry grade safety and protection.

THE SHOW 2015

[More Info.](#)

Model: Polly

Makeup/Hair: Eva Svobodova

Photography: James Knipe

[BACK TO DESIGNERS](#)

# OLIVIA HAYWARD

Growing up in Victoria BC, Olivia found her inspiration in the great outdoors. Moving to Vancouver to pursue her dreams of design, she was able to explore her interests in sustainability, technical design, and the importance of industry ethics and responsibility.

Olivia has studied at Kwantlen Polytechnic University, in the Bachelor of Design in Fashion & Technology program for the past 4 years. In her third year, Olivia was fortunate enough to spend a semester studying abroad in Helsinki, Finland at Metropolia University.

Olivia currently works in the industry, at Chloe Angus Designs.

[olivialisettehayward@gmail.com](mailto:olivialisettehayward@gmail.com)  
[www.olivia-hayward.com](http://www.olivia-hayward.com)

— RUKSTIN —  
— △ —





# RUKSTIN



FALL / WINTER 2016

*Designer: OLIVIA HAYWARD*

Rukstin is a sustainable menswear collection, designed for the transitional west coast man. By use of natural and up-cycled materials the F.W. 2016 collection is gentle on our environment, yet designed to stand up to it. Whether under the trees, or on the streets of Vancouver, Rukstin is made for the journey.

Model: Graham Douglas  
Photography: Katrina Beveridge  
Photography  
Accessories: Loper & Haas

THE SHOW 2015

[More Info.](#)

[BACK TO DESIGNERS](#)

# CHARITY HU

Charity did not grow up in a wealthy family when she was a child; however, inspired by her grandmother, who made her childhood clothing, Charity strives to become a designer that creates to bless and fill others' needs. Carrying a thankful heart, she desires to reach out to various 3rd world countries, to spread the love and joy through apparel. She values finding herself and making a strong connection with the clothes she produces. She believes that clothes express who you are. It is important to confidently be who you are. Charity aspires to motivate others to fearlessly be themselves. She values the creative processes that designers put through for each garment, a garment carries life and meaning, it's not just a beautiful piece of garment. After graduation, Charity plans to find an employment that combines both design and business within the industry that guides her toward starting her own design label.

[charityhu604@gmail.com](mailto:charityhu604@gmail.com)  
[ca.linkedin.com/in/charityanna](https://ca.linkedin.com/in/charityanna)





SPRING / SUMMER 2016

*Designer: CHARITY HU*

Deep is maternity clothing for women between 25-35. Inspired by waves of the oceans and the water represents waves of love and peace that's constantly surrounding the baby. Deep offers comfortable casual-semi formal wear that involves interesting draped features, inspired by patterns of waves created by the ocean.

Model: Virginia Chiu  
Photography: Joanne Joyce Goh  
Styling: Charity Hu

THE SHOW 2015

[More Info.](#)

[BACK TO DESIGNERS](#)

# ANGELA HUANG

Angela debuted her Spring/Summer 2014 collection at Vancouver Fashion Week and later on was chosen as one of the top 25 finalists for Telio's nationwide competition "Canada's Break Through Designers". Angela draws inspiration from architecture and traveling. Self-described as a minimalist; her aesthetic combines textures with unique design lines and detailing.

[angelahuangdesign@gmail.com](mailto:angelahuangdesign@gmail.com)  
[www.angelahuangdesign.com](http://www.angelahuangdesign.com)

# ANG



# ANG

FALL / WINTER 2015

*Designer: ANGELA HUANG*

ANG focuses on well-tailored fashion inspired by architecture and menswear for the creative modern woman. The concept behind the brand is to change stereotypes. ANG is a fashion label that believes in being true to your own identity. The designer appreciates the classic and original sartorial of fashion.



Model: Hye Kil

Photography: Jason Mordeno

Styling: Angela Huang

THE SHOW 2015

[More Info.](#)

[BACK TO DESIGNERS](#)



# NEGIN IZAD

Negin released her first ready-to-wear collection in Fall 2013. Since then, NOCTEX has gained international following from individuals that share her vision for multi-wearable, unisex and monochromatic garments.

[info@shopnoctex.com](mailto:info@shopnoctex.com)  
[www.shopnoctex.com](http://www.shopnoctex.com)



# N O C T E X



# N O C T E X

*Collection: EXPIRATION*  
*Designer: NEGIN IZAD*

'Expiration' is the modern gateway to traditions of the past, re-surfacing concepts of decay. Each piece is custom made, aged naturally and distressed by hand for further functionality as custom made hardware ages uniquely over time with each wearer.

THE SHOW 2015

[More Info.](#)

[BACK TO DESIGNERS](#)

Model: Janine McAughren  
Photography: Negin Izad

# KAITLYN JUNG

Kaitlyn's design philosophy evolves from a background of fine arts and an interest in technical skill. She hopes to dispel personal and societal boundaries through her present and future work, while continuing to explore the capabilities of modern technology in the fashion universe.

[kaitlyn.jung19@gmail.com](mailto:kaitlyn.jung19@gmail.com)



**UNCHECKED**



# UNCHECKED

SPRING / SUMMER 2016  
*Designer: KAITLYN JUNG*

Unchecked is a gender-neutral line inspired by progressive young leaders. The line supports the deterioration of stiff gender expectations with an androgynous selection of modern streetwear.

THE SHOW 2015

[More Info.](#)

[BACK TO DESIGNERS](#)

Model: Luke Fedorchuk

Photography: Tom Davison

# DEANNA KADOTA

Deanna is a young designer who considers fashion as an important form of modern communication. As a tool to connect with others, she loves the freedom and expression available to her in the design field, as well as how it ties into different industries like business, sociology, and technology innovation. After graduating, Deanna intends to take a short trip with friends to celebrate her accomplishments and upon her return, jump right into the working world. She plans on using her skills and abilities to help produce clothes that empower the wearer and make people happy through fashion. By channeling passion and drive into the industry, she hopes to make a difference and an impact, even just by starting conversations and discussing the world and the events in it.

[deanna.kadota@shaw.ca](mailto:deanna.kadota@shaw.ca)

# NONPAREIL





# NONPAREIL

SPRING 2015

*Designer: DEANNA KADOTA*

Nonpareil is a high quality business-wear line for plus-sized women who want to display their fashion sense while still being work appropriate. Inspired by the facets and angles in gemstones, crystals, and modern architecture, the line uses pops of contrasting colour to create a bold impression of personal style. It is a concept born out of a gap in the market for women looking for the correct fit and clothing that is on trend and fashionable. The plus-size sector is a severely underserved market, and is often tightly kept as such by large companies and the manipulation of consumer mindset. As this collection opens a discussion at finding a wide spread solution to social issues in the industry, Nonpareil is a starting point for progressive thinking and problem solving.

THE SHOW 2015

[More Info.](#)

[BACK TO DESIGNERS](#)

Model: MacKenzie Stinton

Photography: Deanna Kadota

# RAE KERZNER

A Vancouver native and socially minded person, Rae has always enjoyed expressing herself through clothing. She began sewing at a young age, taking on more ambitious projects over many years. Her desire to turn her love for constructing garments into a viable career path led her to KPU's fashion program. Here she has applied her interest in the technical and business aspects of the industry to her thesis line. When not designing, Rae enjoys listening to music and being outdoors. She is inspired by the challenges that design poses and the reward of creating with raw materials.

[rae.kerzner@gmail.com](mailto:rae.kerzner@gmail.com)  
[www.raekerzner.ca](http://www.raekerzner.ca)





FALL 2015  
*Designer: RAE KERZNER*

Cycletto sets a precedent that style need not be compromised for function in women's cycling apparel. Catering to the active urban professional, Cycletto garments transition seamlessly between work and leisure. This line incorporates unique details and contemporary styles. Discreet pant gussets and jacket vents enhance performance and comfort during her commute while not compromising the look of the garments. Many of the fabrics have breathability and water repellency properties and do not appear sporty. Featuring soft draping and clean lines, the Cycletto Fall 2015 collection encourages reconnection with one's natural surroundings.

Model: Carly Winch  
MUA: Carly Winch  
Photography: Jarusha Brown  
Photographyv

THE SHOW 2015  
[More Info.](#)  
[BACK TO DESIGNERS](#)



# JAMES KNIPE

James grew up in a small town in BC but always felt out of place and wanted to live in a much larger city with more creative opportunity. After a brief stint in Victoria, James moved to Vancouver to pursue his education in fashion and surround himself with people who share the same passions as himself. He spent a semester abroad in Helsinki, Finland where he really crafted his design philosophy and discovered who he is as a designer. James has been fortunate enough to travel to many places in the world where he has pulled inspiration through culture, fashion and industrial design.

[jknipe8@gmail.com](mailto:jknipe8@gmail.com)  
[www.james-knipe.com](http://www.james-knipe.com)

## HABITS OF YOUTH





# HABITS OF YOUTH

SPRING 2016

*Designer: JAMES KNIPE*

HabitsOfYouth is a contemporary, fashion forward menswear brand inspired by minimalism and modern architecture. The Spring 2016 season was inspired by Scandinavian street style and architecture and features a mono-chromatic colour palette mixing in a pop of colour to keep it fresh for Spring. Each season features unique prints and graphics inspired by modern art. Habits Of Youth uses a variety of unconventional fabrics and details that focus on a more futuristic silhouette and design.

Model: Rory Erickson  
Makeup/Hair: Eva Svobodova  
Photography: James Knipe  
Styling: Natalie Wu

THE SHOW 2015

[More Info.](#)

[BACK TO DESIGNERS](#)

# ALICE LAM

Born in Taiwan, and raised in Vancouver, B.C. Alice fell in love with design at a young age through fashion sketches and styling her dolls. With heavy influences from her father, an interior designer and architect, he encouraged her to move into the world of fashion design.

Realizing that the fashion industry held promising career options for her, she made it her goal to become a designer. With the help of a six-month exchange to Melbourne, Australia, her design philosophy was refined and she is ready to pursue a career in fashion.

[alice.lam93@gmail.com](mailto:alice.lam93@gmail.com)  
[alamdesigns.com](http://alamdesigns.com)

# MINUS





# MINUS

FALL 2015

*Designer: ALICE LAM*

Inspired while in Australia, Alice observed minimalism in practice and has applied it as the foundation of her Fall 2015 line MINUS, the underlying message of “buying less but buying well” is incorporated into her minimalistic aesthetic with quality organic fabrics to produce this sophisticated collection. Alice draws from her influences, using the lines and design elements of architecture which is projected onto the details of her garments.

Model: Thérèse MacCallum  
Makeup/Hair: Blair MacDonald  
Photography: Julian Lee  
Styling: Amanda Lee

THE SHOW 2015

[More Info.](#)

[BACK TO DESIGNERS](#)

# MICHELLE LARSEN

The possibility to provoke connection and inspire creativity is what motivates Michelle to explore the process of design. Valuing ethical creation and handwork, Michelle promotes the story behind each garment while experimenting with a range of techniques. Her passion to discover new possibilities motivates Michelle to design and intrigues her to explore textile art.

Michelle's inspiration often comes from her natural surroundings and every day interactions. Growing up in Vancouver Island formed her appreciation for nature and the silence found outdoors. The impact she's felt from those around her has developed an importance to connect with others through design. Through Michelle's final collection, Fortiv, she has developed a localized business plan based on utilizing Vancouver's resources and promoting connection between the maker, the garment and its wearer.

[michelle@michelle-larsen.com](mailto:michelle@michelle-larsen.com)  
[www.michelle-larsen.com](http://www.michelle-larsen.com)

# fortiv





# fortiv

FALL 2016

*Designer: MICHELLE LARSEN*

Fortiv's mission is to provide an eclectic alternative to fast paced consumption. The creative vision is grounded in a holistic approach to fashion. Valuing local production, natural materials and the preservation of hand crafts, Fortiv presents timeless clothing promoted through their quality, versatility, and hand work. An experimental approach to hand crafts reflects Fortiv's re-interpretation of traditional art forms including dyeing, embroidery, and hand applique. Textural details and materials adapt to a modern aesthetic, contrasting organic movement with structural silhouettes.

Fortiv's Fall/Winter 2016 collection is inspired by nature's adaption into new environments. Michelle's initial spark of inspiration came from her grandfather's Bonsai trees and their adaption to a human environment. The process of creation is shown in each movement of the tree, formed through time, patience and care. Reminiscent of curving branches and falling pine needles, textural materials and hand applied details have been used to create shape and fluidity within the collection.

THE SHOW 2015

[More Info.](#)

[BACK TO DESIGNERS](#)

Model: Candace Darling  
MU/ Hair: Rachel Samson  
Photography: Jamie Mann

# JESSICA LEE

What Jessica loves about design is that there is no right or wrong answer; everybody's creative mind is unique. Jessica is constantly inspired by her surroundings: nature, family and friends. Jessica inspires to pursue a career in the industry where she can communicate business and design cohesively and continue to inspire those around her.

[jessicalee.224@live.ca](mailto:jessicalee.224@live.ca)





# Pebbles & Puddles

Spring Summer 2016

*Designer: JESSICA LEE*

Pebbles and Puddles is a locally designed collection for little girls who love to play outdoors. Inspired by the essence of traditional high tea parties Pebbles and Puddles creates a line of feminine weather-proof raincoats that have technical properties.

Model: Maegan Kong  
Photography:  
Jas Grace Photography

THE SHOW 2015

[More Info.](#)

[BACK TO DESIGNERS](#)



# MICHELLE LEUNG

A career in fashion design perfectly marries Michelle's interests in art, sociology, and business. Studying at Kwantlen has taught her how to connect personal values with empathy for a niche market. Michelle strives to create clothing that inspires storytelling and longevity.

[michelleleung93@gmail.com](mailto:michelleleung93@gmail.com)

# Neverland





# Neverland

FALL 2015

*Designer: MICHELLE LEUNG*

Neverland is a gender-neutral childrenswear line that can be passed down from sibling to sibling. With classic silhouettes and design details that provide a subtle form of dress up, Neverland will be enjoyed by children today and tomorrow.

THE SHOW 2015  
More Info.

BACK TO DESIGNERS

Model: Taylah Mercier  
Photography: George Lawson

# JESSICA LEWTHWAITE

Jessica's appreciation for clothing came at an early age and was influenced by her grandmothers. She believes in creating clothing that will make the individual feel confident and empowered.

[jklewthwaite@gmail.com](mailto:jklewthwaite@gmail.com)





# ARDOR & TELM

FALL 2015

*Designer: JESSICA LEWTHWAITE*

Ardor & Telm is a maternity line designed for the on-the-go Vancouver woman. She is modern and stylish and shouldn't have to sacrifice style during this time. Garments are designed with fit and function in mind and are effortlessly chic.

Model: Amelia Trofymow

Makeup/Hair: Amelia Trofymow

Photography: Maddy Adams

THE SHOW 2015

[More Info.](#)

[BACK TO DESIGNERS](#)

# EUGENIE LIN

Design is a combination of creative thinking and problem solving. Naturally Eugenie fell in love with the freedom and innovative ways to incorporate design in her daily life. An appreciation for her education at KPU grew when she learned the technical, business, social, and ethical aspects of the industry. After graduation, Eugenie plans are to travel and develop herself culturally through new surroundings, people and art. Eugenie desires to work in the creative field of design, prints and graphics.

[euegenielinlin@gmail.com](mailto:euegenielinlin@gmail.com)  
[ca.linkedin.com/in/eugenielin](https://ca.linkedin.com/in/eugenielin)



ADIRA STATE



ADIRA STATE

FALL 2015

*Designer: EUGENIE LIN*

Adira State is a quality driven line of professional apparel catered to working women ages forty to sixty. The brand focuses on combining comfortable fit with timeless style to visualize a woman's best self. The fall/winter 2015 collection is inspired by emanating lines that represents the state of being clearheaded, energized and radiant. The mood is then transferred into draping details and design lines to offer a fashion forward and feminine touch to the work uniform.

Model: Jessica Ternowski  
Makeup/Hair: Ruby Chung  
Photography: Scott Horsfall  
Styling: Eugenie Lin

THE SHOW 2015

[More Info.](#)

[BACK TO DESIGNERS](#)

# BLAIR MACDONALD

Originally from a small town in Saskatchewan, Blair knew from a young age that she belonged in the world of fashion; it was always a part of her, even before she knew what it meant. Her love of fashion was fueled by the creative freedom it gave her and the ability to create anything from her imagination. Blair spent the spring semester of 2014 abroad in England at the University for the Creative Arts in Epsom where she learned the importance of the design process and was able to stretch her creativity in new ways. Upon her return in the summer, she completed her internship at Manuel Mendoza where she discovered her passion for hand work and detailing. After The Show, Blair will have the opportunity to showcase her fourth year line at Saskatchewan Fashion Week. Blair hopes to find a fulfilling career that makes people happy and allows for a little sparkle.

[blair.macdonald7@gmail.com](mailto:blair.macdonald7@gmail.com)





*Designer: BLAIR MACDONALD*

Marianna brings distant memories back to life while making women feel beautiful, poised, and unique for every special occasion. Marianna passes on the history of repurposed clothing by creating new heirlooms that can be shared and cherished with the next generation. The line is inspired by Blair's Irish grandmother to honor her values and her memory as she understood the importance of reusing what you had and making it last until the next generation. Because repurposed clothing is used, each garment is a unique piece of art. The silhouette and styling are reminiscent of the glamour and sophistication of the 1950's, bringing back forgotten memories of the past. Each garment is hand crafted with couture techniques so that a story is told with every stitch. Exquisite hand beaded details along with careful internal structuring ensure any woman wearing Marianna will look her absolute best.

Model: Candance Berg  
Makeup/Hair: Lily Li  
Photography: Lily Li  
Styling: Lily Li

THE SHOW 2015

[More Info.](#)

[BACK TO DESIGNERS](#)



# DENISE MOK

Born in Vancouver, BC Denise found her interest in design early in life through art education. She is a mindful designer - considerate of the intricate details in the wide scope of each design. Denise's inspiration flows from the Pacific North-Coastal climate and cultural atmosphere. Along with a diploma in Fashion Marketing, Denise brings a diverse set of skills in fashion, technology, and marketing which has prepared her for the challenges of the industry.

denisesymok@gmail.com  
denisemokdesigns.com

IONA /





# IONA /

SPRING 2016

*Designer: DENISE MOK*

Iona is a line of lightweight female dinghy sailing apparel that reflects the lifestyle of a dinghy sailor with the use of soft design lines, colours, and digital print sublimation without sacrificing functionality that is needed when sailing. Denise's source of inspiration for Iona comes from the vast number of water activities available in Vancouver, British Columbia on a year-round basis. Denise's passionate friends who love sailing are another inspiration with how much work they put into the sport.

THE SHOW 2015

[More Info.](#)

[BACK TO DESIGNERS](#)

Model: Liza Labercane

Photography: Vincent Wong

# CHELSEA NEILSON

Kwantlen's degree program has given Chelsea a different outlook of the fashion industry as she has seen the variations of career paths it presents. Currently, she has found a path for herself in quality assurance while completing her program degree. This new endeavor has sparked Chelsea's keen interest in quality, manufacturing, and engineering as they connect with her future career goals.

[cmnielson92@hotmail.com](mailto:cmnielson92@hotmail.com)

*Camilla & Co.*





# Camilla & Co.

SPRING 2016

*Designer: CHELSEA NEILSON*

Camilla & Co. is all about empowering women to feel confident in their attire during their lounge days. Women of all ages at any point in their lives should feel beautiful in their own skin. Age does not define who we are but it is a number that symbolizes our extent of life, wisdom and love.

Model: Annette Ross  
MUA: Annette Ross  
Photography: Chelsea Nielson &  
Marg Johannesen

THE SHOW 2015  
[More Info.](#)

[BACK TO DESIGNERS](#)

# DEVON OKAMOTO

Devon has always been involved in the arts. Her creative passion for illustration and the arts led her to an education in fashion design. Devon has added depth and skill to this passion over the past four years. Delving deep into the current issues in the fashion industry, Devon has built a determination to create with mindfulness for the earth during this time. She aspires to advocate a mindset of conscious consumerism in not only fashion, but all of our local industries. With this in mind, many of her designs focus on versatility in wear, natural or handmade qualities, and encouraging a less wasteful lifestyle.

[devonokamoto@gmail.com](mailto:devonokamoto@gmail.com)  
[devonokamotodesign.com](http://devonokamotodesign.com)





FALL 2015

*Designer: Devon Okamoto*

Catkin is a unisex children's line for creative and growing kids ages 5 to 10. Inspired by west coast nature, screen-printing and topstitching are utilized to create graphic designs on simple, comfortable silhouettes. Adjustability is a focus for longer and more valuable wear, while a gender-neutral style encourages equality and individuality in the coming generations. The brand strives to establish a loyal customer base that appreciates quality and versatility placing importance on social responsibility within our communities and the positive effects of localized businesses. This doesn't mean not expanding or growing to new communities, but rather being involved and sensitive to the needs of each unique community we enter. This means being involved with the locals of each place we venture to, and responding readily to customer feedback, while staying true to our brand philosophies.

THE SHOW 2015

[More Info.](#)

[BACK TO DESIGNERS](#)

Model: Amelia Schurch

Photography: Devon Okamoto

# FIONA PANG

Fiona was born in Vancouver, BC where she grew up with an appreciation in creativity and hands-on learning. When she took her first sewing classes she found a sense of accomplishment in being able to visualize how the patterns fit together, like working out a puzzle. Fiona chose to pursue an education and career in fashion where she can constantly challenge herself and acquire new skills. Throughout her four years at Kwantlen, Fiona learned technical skills in pattern drafting and design as well as business skills. She looks forward to applying her knowledge to career opportunities within the industry.

[fpang93@gmail.com](mailto:fpang93@gmail.com)



*barefoot lily*



# barefoot lily

SPRING 2016

*Designer: Fiona Pang*

Barefoot Lily is a childrenswear line for girls ages 4 to 8, using organic cottons and natural dyes to pair with their sensitive skin. Each piece is unique as the dyed fabric matures into a wide range of colours through prolonged use and exposure to sunlight. Organic cottons are an alternative to conventional cottons as they are grown without GMO seeds or pesticides and other harsh chemicals which can cause skin allergies and irritations to some children. Barefoot Lily carries all garment types that can be worn together as complete outfits. The company noticed parents are becoming more conscious and aware of what is being put into their daily lives and they aim to give parents the power of knowing more about their products. Barefoot Lily's target market loves spending time with her friends, family and community. She enjoys going to parks, community gardens, farmers markets and outdoor movie theatres in her neighbourhood. Her parents believe in living a healthy lifestyle through eating and wearing organics and passing on their values onto their daughter. Barefoot Lily's Spring 2016 collection A Painter's Garden is inspired by nature and the little artist within. Our pieces include colours found outdoors and flower shaped notions.

THE SHOW 2015

[More Info.](#)

Model: Lyla Pollard

Photography: Deanna Kadota

[BACK TO DESIGNERS](#)



# GURJIT PARMAR

Gurjit was born and raised in Nanaimo, BC. Growing up, she shared a close relationship with her father, who first taught her how to hand sew. She admired and appreciated his interest for style, coordination and detail in his own wardrobe. This inspired her admiration for menswear.

[gurjitparmar4@gmail.com](mailto:gurjitparmar4@gmail.com)  
[www.gurjitparmar.com](http://www.gurjitparmar.com)





# DENMAN & HARO

FALL/WINTER 2015  
*Designer: Gurjit Parmar*

We provide confidence, luxury, and style to the Denman & Haro man. Minimalist designs that are made with quality materials and the highest of standards is our design philosophy. Each of Denman & Haro's pieces, integrate great fit, style, functionality and personality.

THE SHOW 2015

[More Info.](#)

[BACK TO DESIGNERS](#)

Styling: Gurjit Parmar  
Photography: James Knipe

# KIMBERLEY PARKER

Kimberley was born and raised in Vancouver. Her line was strongly inspired by bespoke couture and the confidence a well-tailored suit can give the wearer. Through Kimberley's years at KPU she has developed a love of pattern drafting and technical design and looks forward to using the knowledge she has gained from KPU to make an impact in the industry

[kimberley.parker@hotmail.ca](mailto:kimberley.parker@hotmail.ca)





SPRING 2016

*Designer: Kimberley Parker*

Cavell creates professional, comfortable clothing with an emphasis on fit, perfect for women who don't feel comfortable in the feminine office wear that is currently available. Cavell's designs are produced with attention to creating timeless, menswear inspired suiting.

THE SHOW 2015

[More Info.](#)

[BACK TO DESIGNERS](#)

Model: Tarise Poulin

Photography: Kimberley Parker

# CAPRI PHILLIPS

Countless hours of experimenting with fabrics at a young age has led Capri to pursue a career in fashion design. Her education has revealed the diverse set of people and skills that are crucial to maintain a successful apparel company. Capri is passionate about using technical design to bring ideas from concept to market.

[capriphilip@gmail.com](mailto:capriphilip@gmail.com)  
[www.capriphilip.com](http://www.capriphilip.com)

# PURE SUIT



# PURESUIT

FALL 2015

*Designer: Capri Phillips*

Puresuit is travel wear for the sophisticated woman who wants to feel as comfortable as she looks polished. Technical fabrics are combined with classic designs to create clothing that can transition into multiple environments.



THE SHOW 2015

[More Info.](#)

[BACK TO DESIGNERS](#)

Model: Erica Minisini

Photography: Alex Barredo

# LAURA PSUTKA

From a young age Laura Psutka found her love of design. It began from creating clothes for her Barbie's. When she entered high school she was excited to pursue her love of sewing by attending textiles class from grad 8 to 12. She chose to pursue her love for creative thinking and design by entering Kwantlen Polytechnic University's Bachelor of fashion design and technology program. At Kwantlen she had the chance to experience all aspects of the fashion industry from design and production to the business and marketing aspects of the fashion industry. From her self-development throughout her 4 years at Kwantlen she has found her love to design for a purpose and create high quality clothing for a specific market. Psutka found her love of Tailoring and Le Flou sewing when she traveled to England to study the art of atelier. On her exchange, Psutka expanded her knowledge of working with delicate soft fabrics, fabric manipulation and couture techniques from industry professionals.

[l.r.psutka@gmail.com](mailto:l.r.psutka@gmail.com)





FALL 2016

*Designer: Laura Psutka*

Psutka's Design inspiration and aesthetic stems from the nostalgic recollections of her travels through Europe, and memories of riding her bike with her father. When she went to Europe, she fell in love with the idea that you can wear any type of clothing to commute to work in and around town. She also found that you don't need to compromise aesthetics for functionality or durability in the clothing you choose. She was inspired to bring more of a feminine look to the regular commuter clothing for working professionals. Simplistic yet functional, Axelle caters to the everyday women who lives, works, and by consequence commutes in Vancouver. Axelle provides women with minimalistic designs and unique fabric manipulation to create functional casual commuter wear for the working woman. Psutka's brand focuses on functionality and durability without compromising design aesthetics when it comes to commuter wear. Psutka focuses in on high quality finishing's and techniques when creating and producing her line to create clothing that will last a life time. Axelle offers styles that work seamlessly throughout all contexts of life, whether it's riding a bike or running to catch the bus, Psutka's collection ensures women arrive at work comfortably and in style. She aims to design clothing that free women from the traditional technical active wear, enhancing stylistic choices of commuters.

THE SHOW 2015

[More Info.](#)

Model: Jill MacDougall

Makeup/Hair: Christina Davie

Photography: Jim Davie

[BACK TO DESIGNERS](#)



# KARLEY SCOVELL

While interning at Manuel Mendoza, Karley discovered her passion for atelier. Her experience of superior garment construction is paired with in-depth knowledge of couture finishing techniques. Karley aspires to enter the film industry as a costume designer with an understanding of both fashion and business.

karleyscovell.com  
karley.scovell@kwantlen.net

**FOX**  

---

**DUNUIT**





# FOX

---

## DU NUIT

SPRING/SUMMER 2016

*Designer: Karley Scovell*

Fox Du Nuit is a costume line for female burlesque performers between 25-35. Inspired by Ancient Egypt, this line features hand-beaded motifs that replicate the artwork found in Egyptian tombs. Respecting the legend of their exquisite taste, Fox Du Nuit combines luxurious material; silk, gold metal beads, and Swarovski crystals.

Model: Brittney Chace  
Makeup: Brittney Chace  
Hair: Danya Soy  
Photography: Andrew Harback

THE SHOW 2015

[More Info.](#)

[BACK TO DESIGNERS](#)

# LISA SIPERKO

Lisa Siperko grew up in Richmond, B.C. From a young age she had aspirations of becoming a fashion designer but decided to pursue other interests. After graduating from the University of Victoria with a degree in Psychology, Siperko travelled extensively throughout Australia, eventually settling in Melbourne. The vibrant, forward-thinking fashion scene in Melbourne reignited Lisa's love of design and she returned to Vancouver to pursue an education at Kwantlen. Siperko draws inspiration from travel and other cultures. She is particularly interested in beach culture, swimwear, and resort wear. In addition to fashion design Siperko also has experience in print design, which she was introduced to while attending the Royal Melbourne Institute of Technology for a semester.

[imsiperko@gmail.com](mailto:imsiperko@gmail.com)  
[siperkodesign.com](http://siperkodesign.com)

a e s · t h e t e



# a e s • t h e t e

SPRING/SUMMER 2016

*Designer: Lisa Siperko*

SIPERKO is resort and cruise wear for the mature female traveller. The line showcases Lisa's custom prints and uses comfortable, travel-friendly fabrics. This particular collection is inspired by Peter Weir's film "Picnic at Hanging Rock" (1975), as well as beach culture.



Model: Kristina Gorbatkova

Makeup/Hair: Meghan Judge

Photography: Morgan Pasiuk

THE SHOW 2015

[More Info.](#)

[BACK TO DESIGNERS](#)

# LYDIA WAIZ

Lydia grew up in White Rock and was involved in her fashion choices from a young age. With the help of her mother and great-grandmother she chose fabric to make her dresses. Influenced by them, she started sewing for herself. She appreciates design in many forms though fashion and architecture are her favourites. During one of her classes at KPU she was introduced to Antoni Gaudi's work and discovered her love for organic architecture. This led to a trip around Europe with a stop in Barcelona to stand between the tree-like columns of the Sagrada Familia - one of Gaudi's most famous works. After graduation she will return to Europe to continue her exploration of design in its many forms.

lydia.waiz@hotmail.com





*Designer: Lydia Waiz*

The Cyprus Lingerie collection is about fitting full-busted women while being elegantly alluring. With a nod to the womanly glamour of the 1950s, the fabrics are luxurious and the designs are simple yet captivating.

THE SHOW 2015

[More Info.](#)

[BACK TO DESIGNERS](#)

Model: Carla Benitez Lazzarotto  
Photography: Taya Photography

# AMY WAN

Amy Wan was born in Shunde, China and raised in Vancouver, BC. Ever since she moved to Vancouver, Amy found pleasure in bringing her unique ideas to form through manipulation of fabric. This soon turned into passion as she looked for ways to develop the necessary skills to continue bringing her ideas to life. Amy believes that there is never an end to learning, and her positive learning attitude has allowed her to develop and hone her technical skills in design and production.

[amy.jy.wan@gmail.com](mailto:amy.jy.wan@gmail.com)  
<http://amy-wan.com>

*Aymee*





# Aymee

*Designer: Amy Wan*

Amy's knowledge and skills were put to the test at Kwantlen Polytechnic University as she designed her final academic collection: Aymee, a transitional maternity, and nursing collection for pregnant women to wear through all stages of pregnancy. While working on her collection, she was able to rely on her technical skills in draping, computer and manual drafting, illustration, and technical package development to work efficiently. In addition, Amy was able to communicate her designs to others, critically, analyze those responses, and synthesize those feedback to ensure the best quality work is achieved. Amy's passion for materializing quality, function, and aesthetics inspired her to produce a contemporary maternity collection: Aymee.

THE SHOW 2015  
[More Info.](#)

[BACK TO DESIGNERS](#)

Model: Diane Cheng  
Photography: Elvin Lai



# JENNIFER WILSON

Drawn to the various forms of art, craft and design, Jennifer is inspired by how they intertwine to create new compositions. As fashion reflects culture, Jennifer is also interested in how fashion can influence and lead to culture that is more sustainable.

wilsonjennifer188@gmail.com  
www.jenn-wilson.com



# DULCET



# DULCET

SPRING 2016

*Designer: Jennifer Wilson*

Dulcet is a contemporary women's brand that values conscious environmental and social responsibility. The line incorporates natural, low impact and up cycled materials, hand dyeing and digital printing. Spring/Summer 2016 was inspired by line drawings, wallpaper prints and natural indigo dye.

THE SHOW 2015

[More Info.](#)

Model: Cheyenne

Makeup and Hair: Rachel Samson

Photography: Jamie Mann

[BACK TO DESIGNERS](#)