



General Information

Name of University

University of Applied Sciences and Arts
Northwestern Switzerland – School of
Business

Fachhochschule Nordwestschweiz
(FHNW) - Hochschule für Wirtschaft

Erasmus Code

CH Brugg02

Homepage

[https://www.fhnw.ch/en/degree-
programmes/business](https://www.fhnw.ch/en/degree-programmes/business)

Semester Dates

Autumn: September - January
Spring: February - June

Accessibility

Wheelchair accessible

Course Offer

To know more about your most suitable study
programme and the course offers, please
check out our [Study Information](#).



International Office

International website:

[https://www.fhnw.ch/en/degree-programmes/business/international-
experience/offers-for-incoming-students](https://www.fhnw.ch/en/degree-programmes/business/international-experience/offers-for-incoming-students)

✉ **E-Mail:** io.business@fhnw.ch

📷 [@fhnw_global_business](#)

📘 [@fhnwbusinessIO](#)

Head of International Relations

Prof. Robert Buttery
robert.buttery@fhnw.ch

Executive Assistant International Relations

Daniela Paltzer
daniela.paltzer@fhnw.ch

International Office Coordinator

Irene Diez, MSc.
irene.diez@fhnw.ch

Power User Mobility-Online

Daniel Hertig
daniel.hertig@fhnw.ch

Head of International Office

Prof. Sabine Künzi
sabine.kuenzi@fhnw.ch

Executive Assistant International Office

Franziska Frei
franziska.frei@fhnw.ch

Incoming Student Service Assistant

Dimitra Andreou
dimitra.andreou@fhnw.ch

Campus

📍 Basel

Academic Coordinators

Prof. Claudia Thali
claudia.thali@fhnw.ch

📍 Olten

Prof. Dr. Susan Göldi
susan.goeldi@fhnw.ch

📍 Brugg-
Windisch

Lydia Chalita
lydia.chalita@fhnw.ch

International Office Administrators

Mirjam Beer
mirjam.beer@fhnw.ch

Pavel Somogyi
pavel.somogyi@fhnw.ch

Samira Kaufmann
samira.kaufmann@fhnw.ch

Nomination and Application Procedure

Applicants must have completed at least one academic year on a bachelor's level. Further students must be officially nominated by their home university and must submit the application dossier within the deadline. Once nominated students will receive an e-mail inviting them to apply.

A study programme of at least **15 ECTS per semester** is required by our university.

1. Step: Student nomination (only from partner universities) via Mobility-Online (MO)

2. Step: Online application on Mobility-Online

Application Deadline: Autumn semester: May 30
Spring semester: November 30

3. Step: Acceptance e-mail and Letter of Acceptance

4. Step: SEMP/FHNW worldwide support application (available on MO)

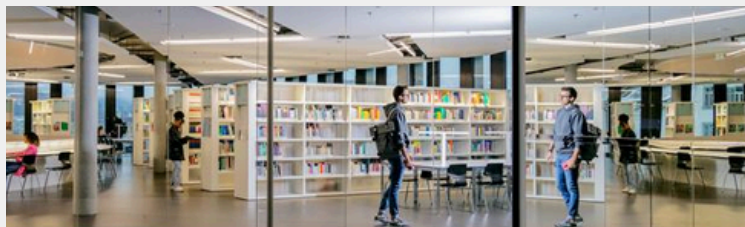
5. Step: Plan your arrival (all students are expected to arrive before the mandatory Info Session Day)

📄 Visa

Non-EU/EFTA citizens will need to apply for a student visa shortly after receiving their acceptance email.

A residence permit is needed for EU and for non-EU/EFTA citizens. All exchange students must apply for a residence permit upon arrival. Students from Australia, Japan, New Zealand, Malaysia, Singapore and the United Kingdom do not need a visa, but they must apply for a residence permit.

For further information, please check this [website](#).



💰 Cost of Living

Approximate Expenses (all prices in Swiss Francs)

Accommodation	450-900 CHF/month
Food	400-600 CHF/month
Transportation	50-100 CHF/month
Health insurance (swisscare)	65-80 CHF/month
Other expenses	200-300 CHF/month

Total per month: 1,165-1,980 CHF

🏠 Grants

Erasmus+ Programme: exchange students from a European partner university studying and living in Switzerland may be eligible to receive a SEMP grant from the Swiss Government.

Rest of the World: exchange students from a non-Erasmus+ programme country partner university may be eligible to receive a FHNW worldwide support of max. CHF 2500.- **With the possibility to receive a full academic year grant. Limited places (first-come, first-served).

Costs for special Needs: Students with disabilities can claim costs related to their disability and incurred due to mobility, e.g., special transport. The final reimbursement is made according to effective costs as supporting documents.

Further information will be provided after the acceptance procedure. General information is available on our [website](#).

Student Council, ESN FHNW & Buddy System

At the FHNW there is a strong presence of student organisations. The FHNW has several student organisations such as the Student Council and the Erasmus Student Network (ESN) FHNW. Local students run these organisations on a voluntary basis and organise activities, trips, the buddy system and social events for and with exchange students throughout their stay at our university.

Locations

Campus Basel

Peter Merian-Strasse 86
4002 Basel

Campus Olten

Von Roll-Strasse 10
4600 Olten

Campus Brugg-Windisch

Bahnhofstrasse 6
5210 Windisch



🗨️ Language Requirements

To apply as an exchange student, students must fulfill our language requirements:

For Degree Programmes and Courses taught in English

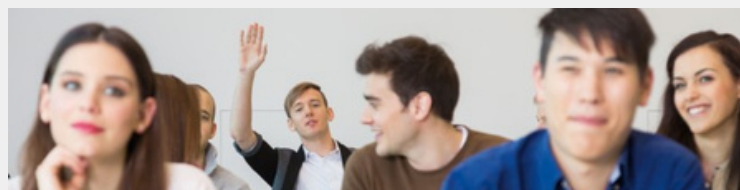
Either a certificate from an acknowledged examiner (one of Cambridge First, Cambridge Advanced, TOEFL iBT 72; TOEIC 785, IELTS 6, ELP B2, Bec Vantage) or a personally signed letter from a lecturer or international coordinator confirming the student has achieved a B2 level in English.

For Degree Programmes and Courses taught in German

Either a certificate from an acknowledged examiner (e.g. Goethe-Zertifikat B2, telc B2) or a personally signed letter from a lecturer or international coordinator from the home university confirming the applicant has achieved a B2 level in German.

❤️ Health Insurance

Basic health insurance that includes accident coverage is mandatory by law for every citizen in Switzerland. Detailed information will be provided on the Info Session Day.



🏠 Accommodation

The International Office and/or the Accommodation Officer at the different campuses will assist exchange students to find accommodation.

Accommodation options can be found [here](#).

Contacts:



Campus Brugg-Windisch
Samira Kaufmann
samira.kaufmann@fhnw.ch



Campus Basel
Mirjam Beer
mirjam.beer@fhnw.ch



Campus Olten
Ishrat Butt
ishrat.butt@fhnw.ch