

Welcome to the

KPU2050

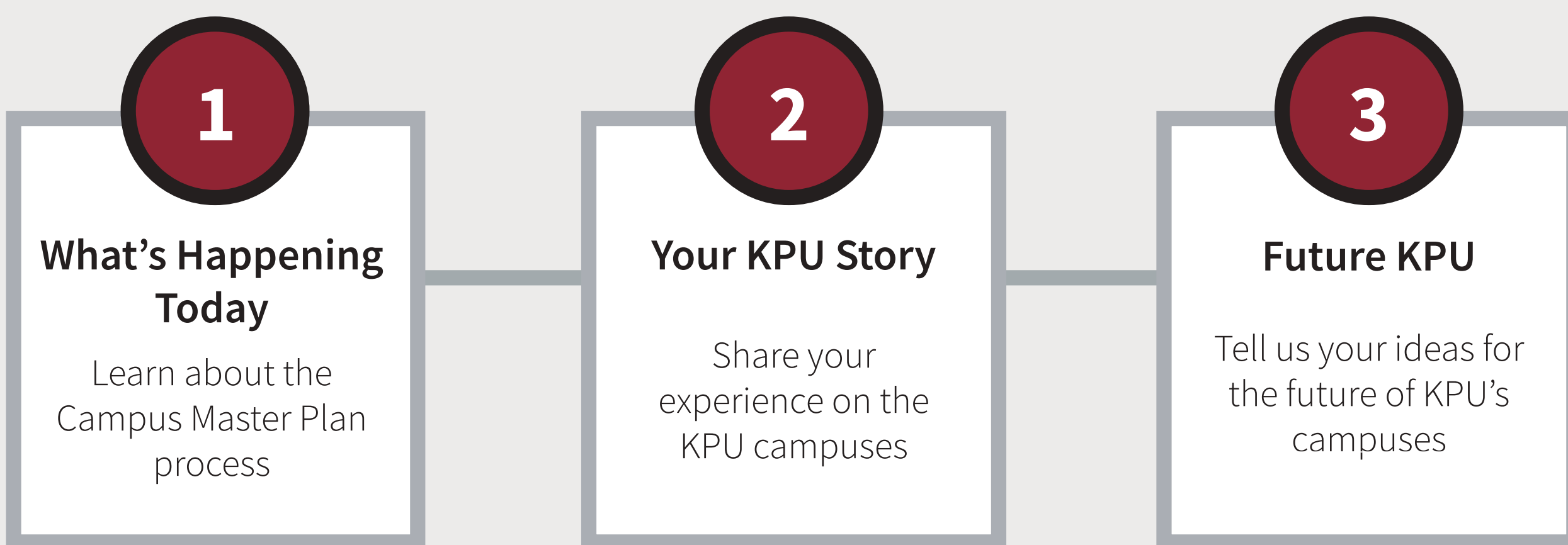
CAMPUS MASTER PLAN

Ideas Fair

KPU is embarking upon an exciting project to develop our first comprehensive Campus Master Plan. This plan will set forth the direction for physical development and growth on all of KPU's campuses to the year 2050.

EXPLORE THREE INTERACTIVE ACTIVITY STATIONS

COMPLETE THE SURVEY



PLAN PROCESS

This planning process has been designed to take place in six phases over 24-months. During this entire process we will be organizing engagement opportunities to hear from you about what the future of KPU's campuses should look like. Here's an overview of the process:



STAY IN TOUCH WITH US!

✉ natalia.finlay@kpu.ca

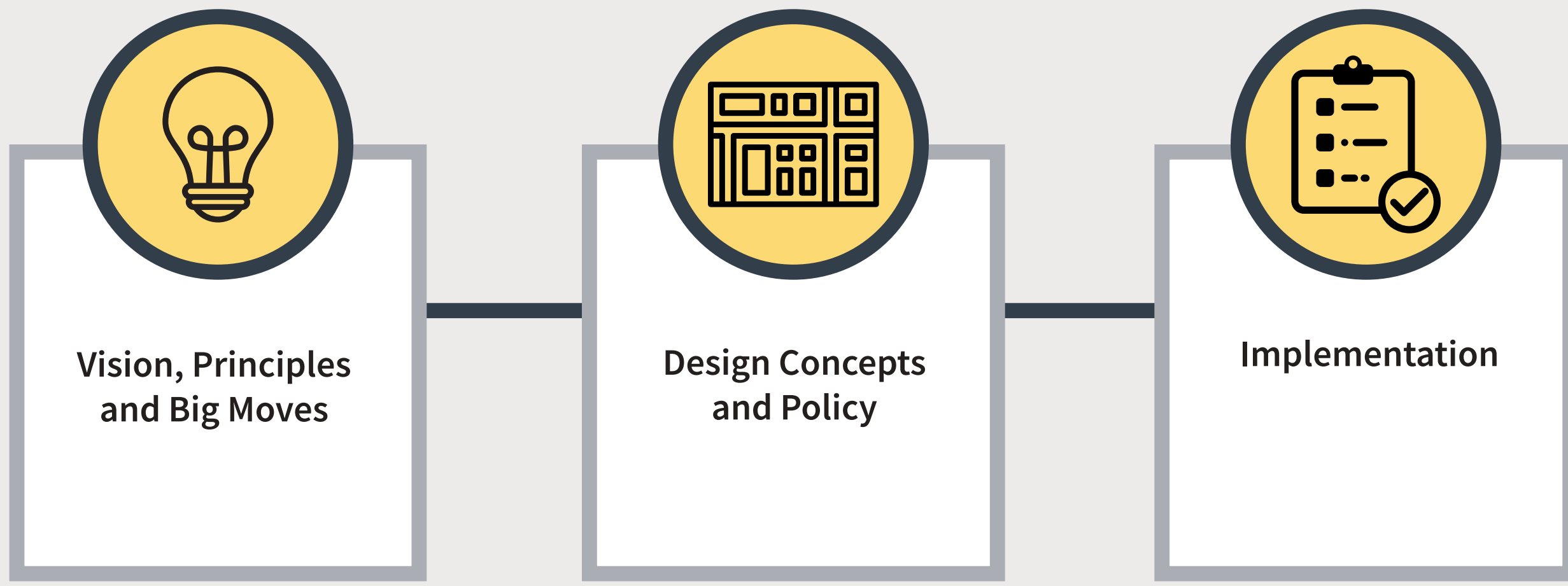
🌐 <https://www.kpu.ca/kpu2050>

INTRO TO CAMPUS MASTER PLANNING

THE CAMPUS MASTER PLAN IS A PHYSICAL MANIFESTATION OF KPU'S STRATEGIC AND ACADEMIC MISSIONS

WHAT'S INCLUDED IN A CAMPUS MASTER PLAN

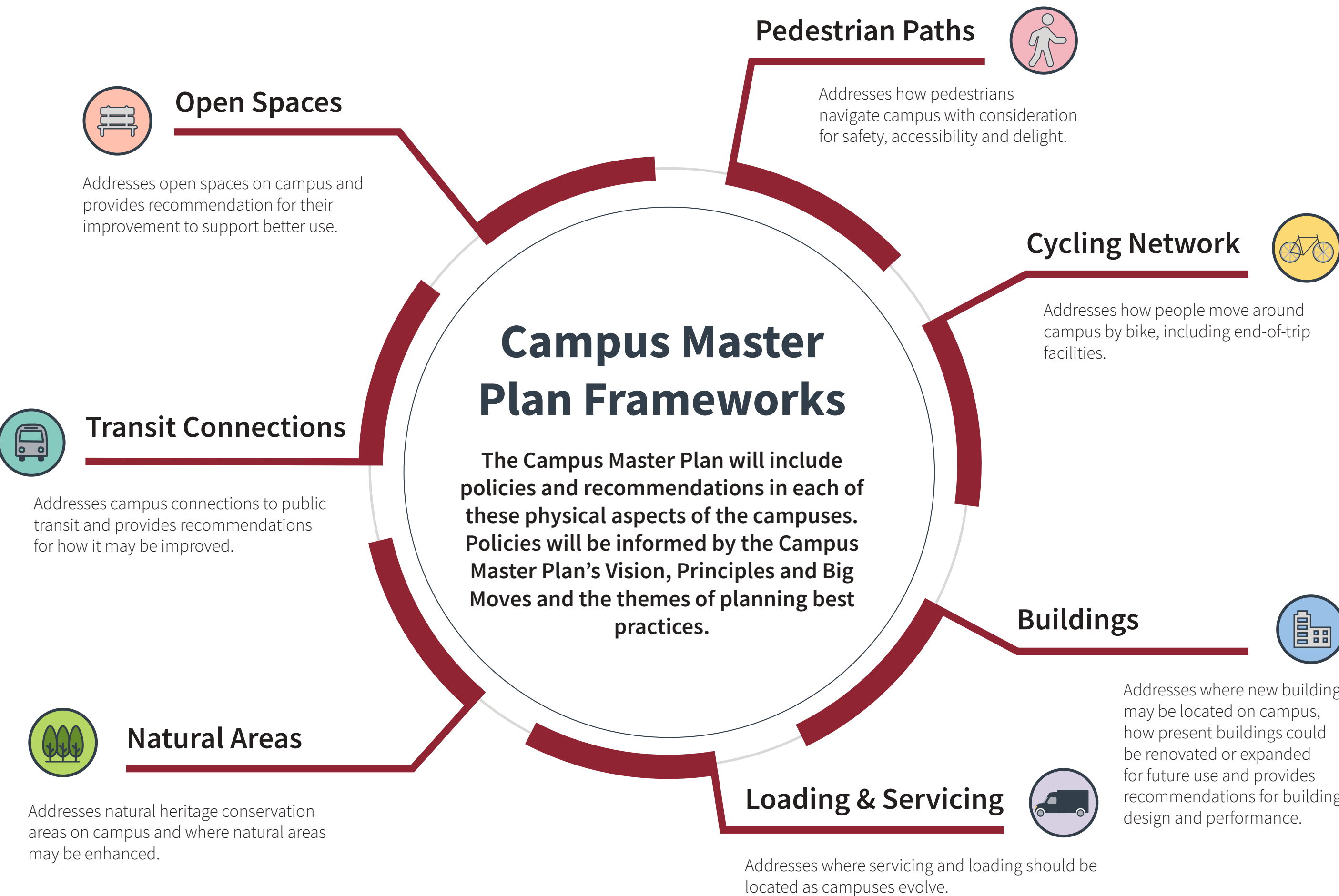
The Campus Master Plan has three sections...



PLANNING BEST PRACTICES

Sustainability, accessibility, Indigenous cultural values, campus community participation, wellbeing and alignment with regional priorities, are all themes that should be embedded in a Campus Master Plan's Vision, Principles, policies, design concepts, and implementation strategy. Here are some examples:

Theme	Example Practices	
Sustainability	Sustainable Design Guidelines	Recommended Additional Studies
Accessibility	Accessibility and Universal Design Guidelines	Cognitive and Physical Accessibility Strategies
Indigenous Cultural Values	Enhanced Relationships with Indigenous Communities	Indigenous Cultural Values as Part of Campus Identity
Campus Community Participation	Ongoing Communication	Ongoing Engagement
Wellbeing	Measurable Targets for Wellbeing	Wellbeing Design Guidelines
Alignment With Regional Priorities	Enhanced Relationships with Regional Stakeholders	Aligned Policies



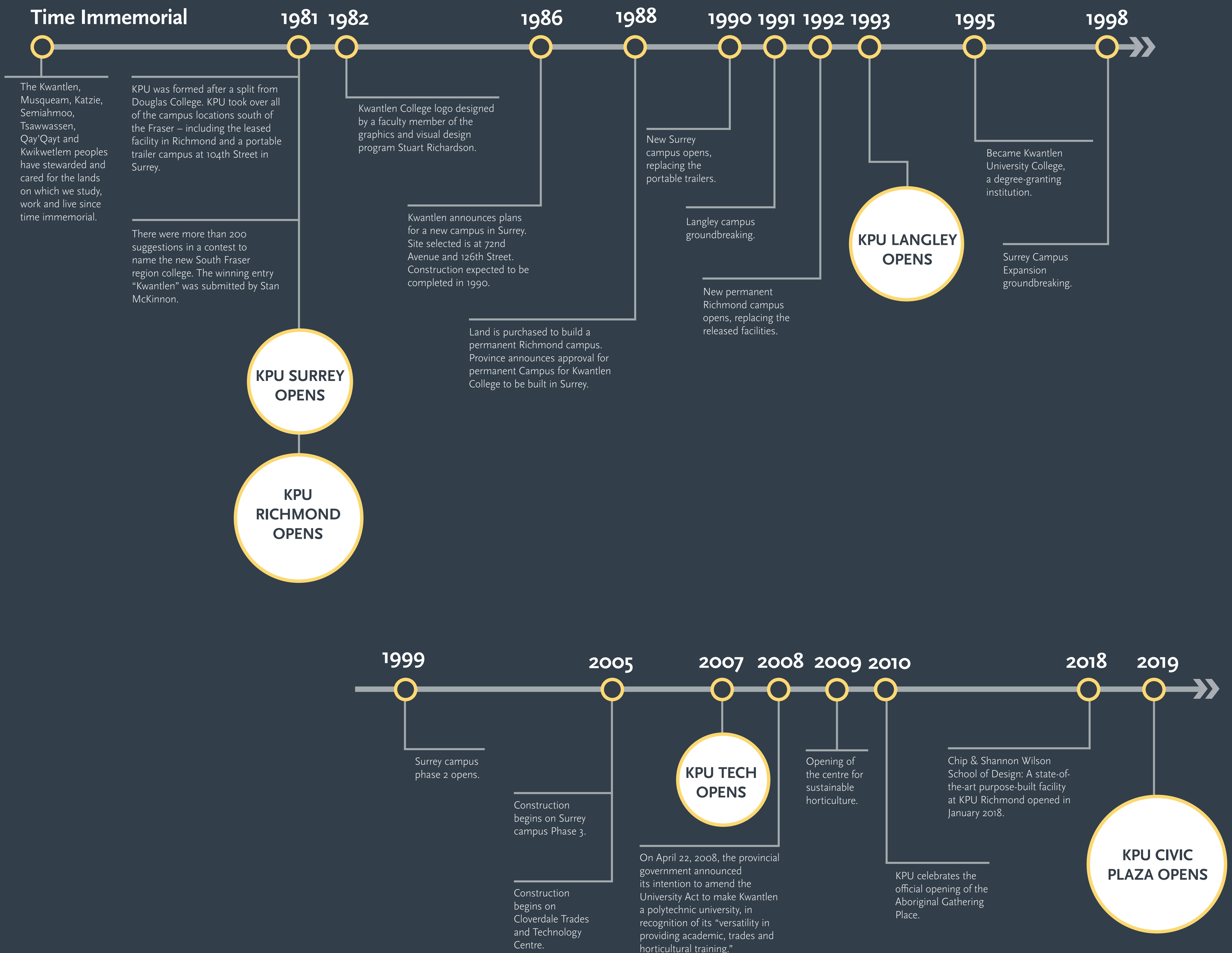
WHAT A CAMPUS MASTER PLAN MEANS FOR KPU

The Campus Master Plan sets forth a long-term vision for physical growth and change on the campuses and offers many benefits including...



HISTORY OF KPU

Over the course of nearly 40 years KPU has expanded to five campuses and has educated over 200,000 students. This is a brief timeline of KPU's growth since Time Immemorial.



THE KPU2050 CAMPUS MASTER PLAN WILL BUILD ON THE PLANNING WORK THAT KPU HAS ALREADY COMPLETED AND ADOPTED.

- 2018 **Vision 2023**
- 2018 **Academic Plan 2023**
- 2016 **Campus Planning Policy and Procedure**
- 2011 **Surrey Campus Traffic and Parking Study**
- 2005-2012 **Surrey, Langley, Richmond & Tech Master Plans**

IN PLANNING FOR THE FUTURE OF KPU, WHAT DO YOU THINK SHOULD BE CONSIDERED FROM A HISTORICAL CONTEXT?



Your ideas here!

CONTEXT | KPU TECH

BUILDINGS

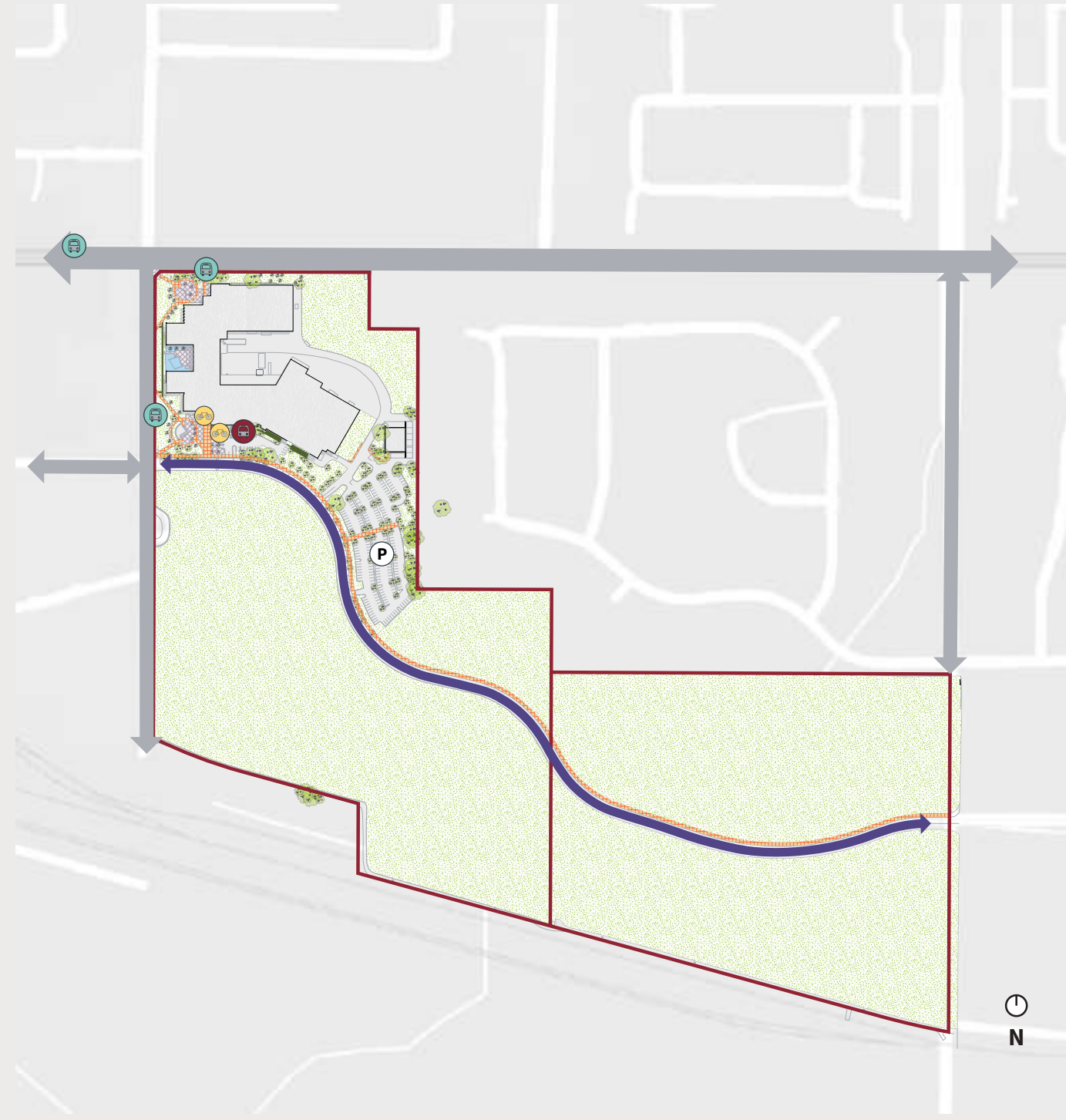
The KPU Tech campus has two buildings. The Main building is two-storeys and hosts most of the campus' classrooms as well as the cafeteria and library. The second building is the Farrier workshop. It is a one-storey building that contains additional student workspace tailored to the Farrier program.



- Legend**
- Classroom + Training
 - Multipurpose
 - Property Line

MOBILITY NETWORKS

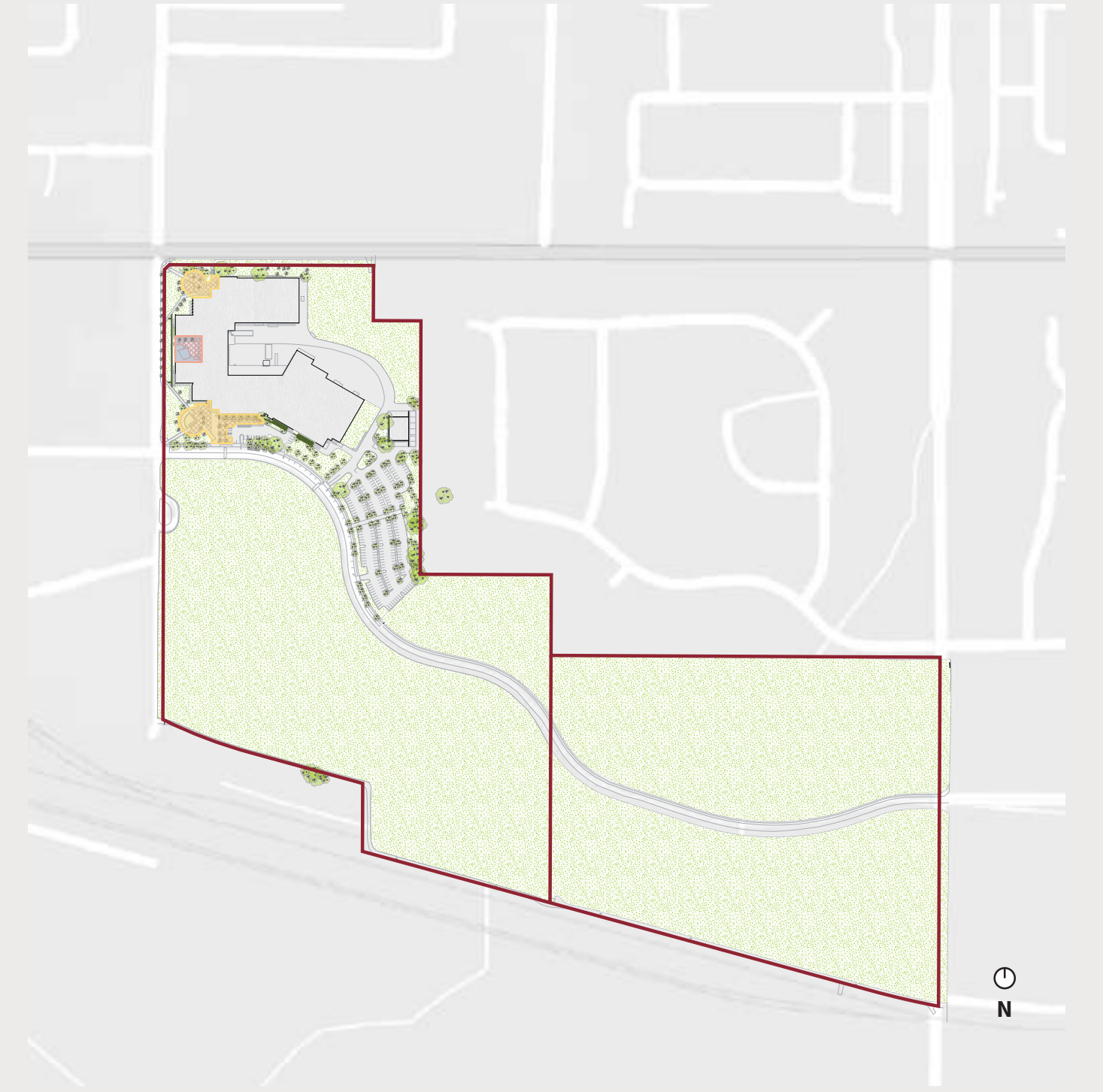
There are three Translink transit stops located adjacent to the campus as well as a stop for the KPU shuttle. There are two bike storage areas on campus but no cycling routes. Paved walkways connect the campus to the parking lot, Highway 10 and 180 st.



- Legend**
- Pedestrian Path
 - KPU Shuttle Stop
 - Translink Stop
 - Bike Storage
 - Car Share Parking
 - Parking
 - Campus Road
 - Local Road
 - Arterial Road

OPEN SPACE

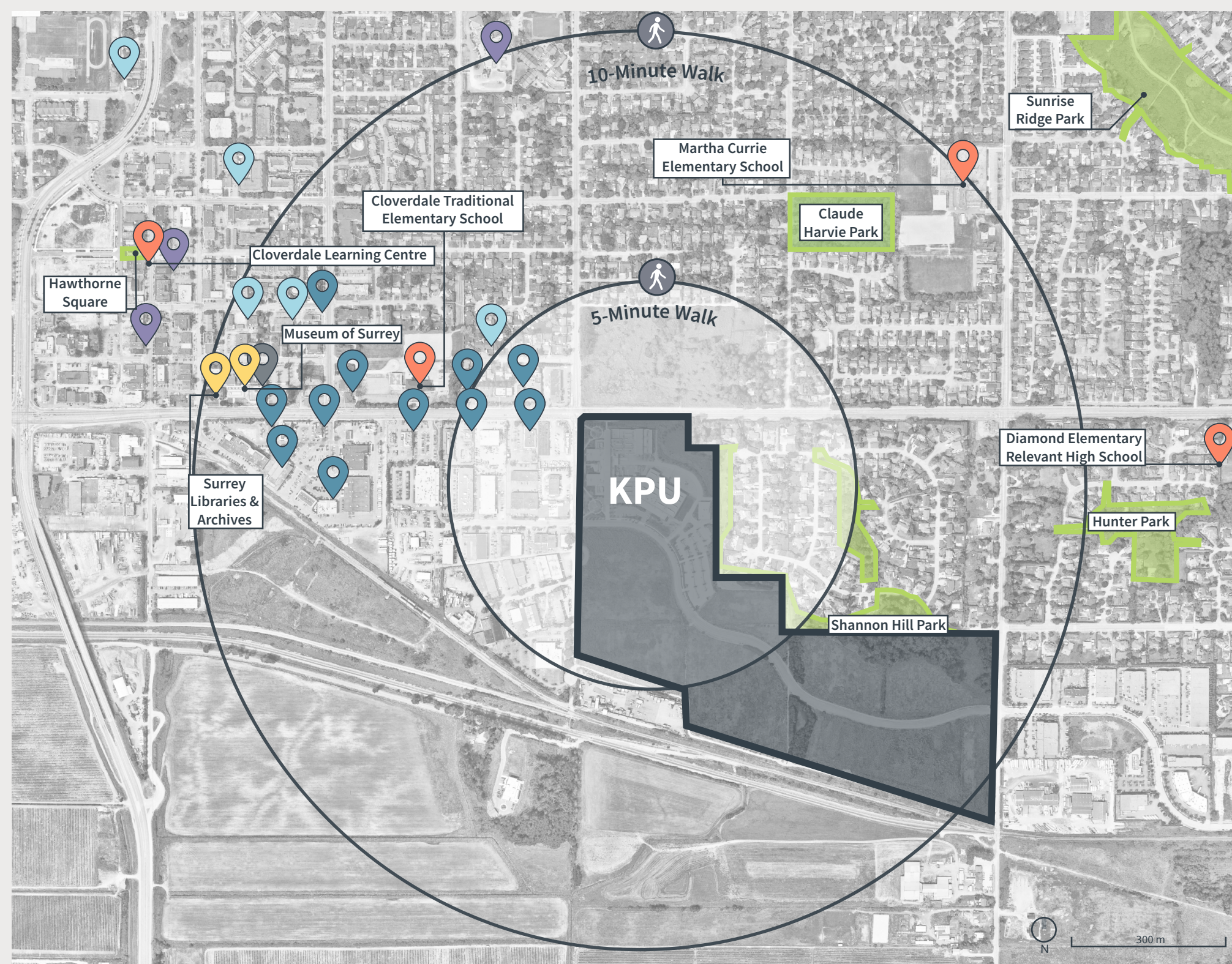
There is minimal designed open space on the campus. Most of the open space is dominated by surface parking. There are two small plazas to mark the building entrances and a landscaped courtyard adjacent to the cafeteria that has a water feature and outdoor seating.



- Legend**
- Entrance Plaza
 - Courtyard
 - Property Line

SURROUNDING USES

The properties surrounding the KPU Tech campus are a diverse mix of industrial, residential and commercial development and agricultural lands. Single family residential forms the majority of the area north of the campus. Areas east and west of the campus are occupied by light industrial uses. Most of the commercial activity is located northwest of the campus. Agricultural land dominates the properties south of the campus, beyond the rail track.



- Legend**
- Park
 - KPU Tech
 - Walking Radius from Main Campus Building
 - Religious & Spiritual
 - Education
 - Civic
 - Childhood Education
 - Cultural Spaces
 - Food Services

MOBILITY CONNECTIONS

Vehicles

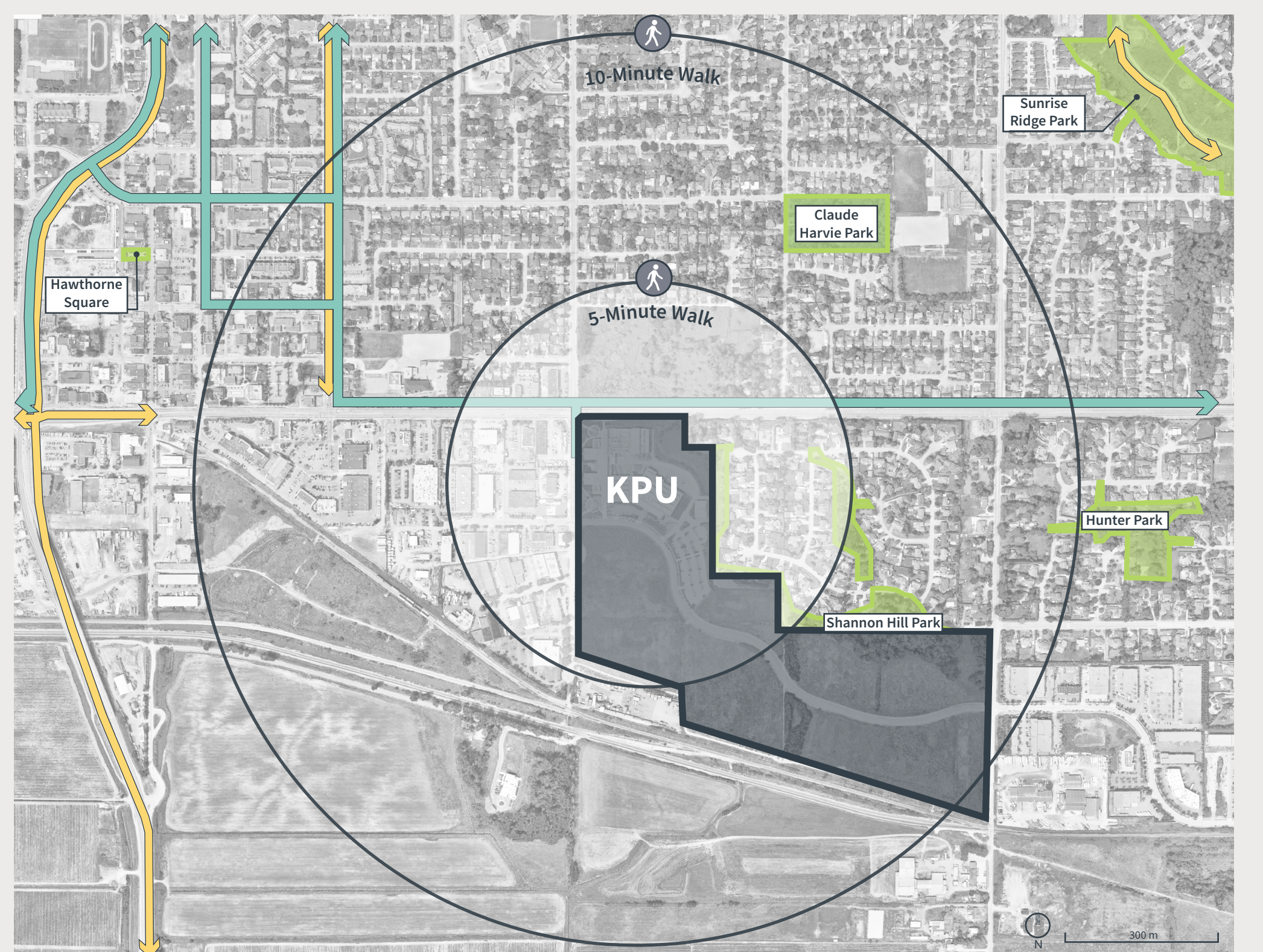
The KPU Tech campus is car-oriented with surface parking and easy access to arterial roads including BC Highway 10.

Transit

Two Translink routes serve the campus: the 342 Newton Exchange and 370 Willowbrook. These buses arrive in 30 minute intervals on average. In addition, the KPU Shuttle moves students, faculty and staff from the Tech campus to the Langley and Surrey campuses.

Cycling

One cycling route connects to the campus along 180 st.



- Legend**
- Park
 - KPU Tech
 - Walking Radius from Main Campus Building
 - Transit Routes
 - Cycling Routes

CONTEXT | KPU SURREY

BUILDINGS

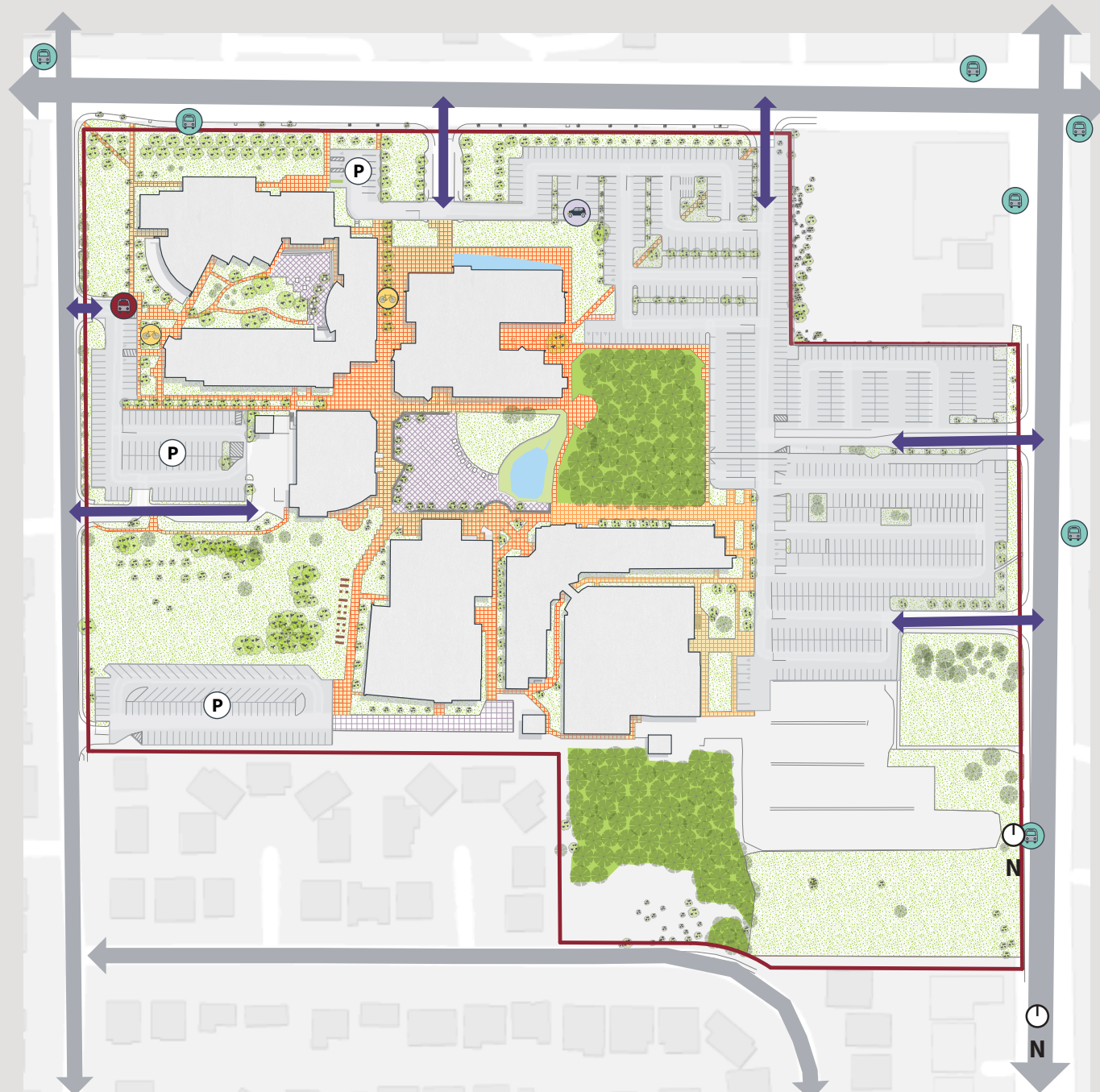
The campus is currently comprised of seven buildings that encompass a variety of uses. The diagram below depicts the dominant use of each of the campus buildings.



- Legend**
- Classroom + Training
 - Multipurpose
 - Office
 - Library
 - Storage
 - Property Line

MOBILITY NETWORKS

There are seven Translink transit stops located adjacent to the campus as well as a stop for the KPU shuttle. There are multiple bike storage areas on campus, including the KSA's secure bike lockers. The sole cycling route that directly connects to the campus runs along 128 St. Paved pedestrian paths are depicted below.



- Legend**
- Pedestrian Path
 - KPU Shuttle Stop
 - Translink Stop
 - Bike Storage
 - Car Share Parking
 - Parking
 - Campus Road
 - Local Road
 - Arterial Road

OPEN SPACE

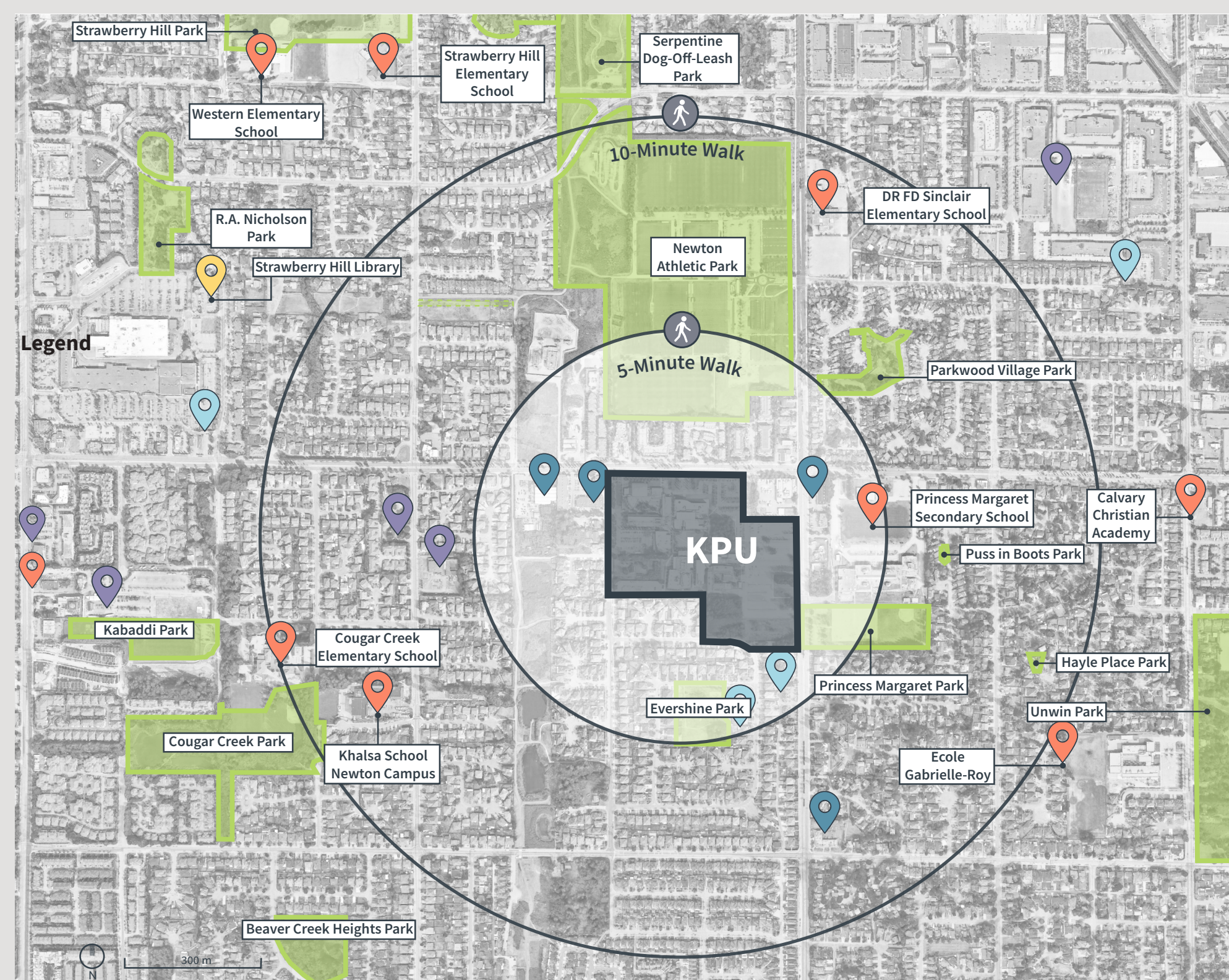
Although the majority of the campus' open space is dominated by surface parking lots, this campus has a diverse assortment of open spaces. There are two naturalized areas, an assortment of outdoor walkways, entry plazas, a large central plaza, and a field. The central plaza is the hub of outdoor campus activity.



- Legend**
- Entrance Plaza
 - Central Plaza
 - Outdoor Walkway
 - Community Garden
 - Cedar Courtyard
 - Open Field
 - Grassroots Patio
 - Woodland Area
 - Property Line

SURROUNDING USES

There is one strip mall to the west of the campus, that provides some food services, but the vast majority of the properties surrounding the campus are residential.



- Legend**
- Park
 - KPU Surrey
 - Walking Radius from Main Campus Building
 - Religious & Spiritual
 - Education
 - Civic
 - Childhood Education
 - Cultural Spaces
 - Food Services

MOBILITY CONNECTIONS

Vehicles

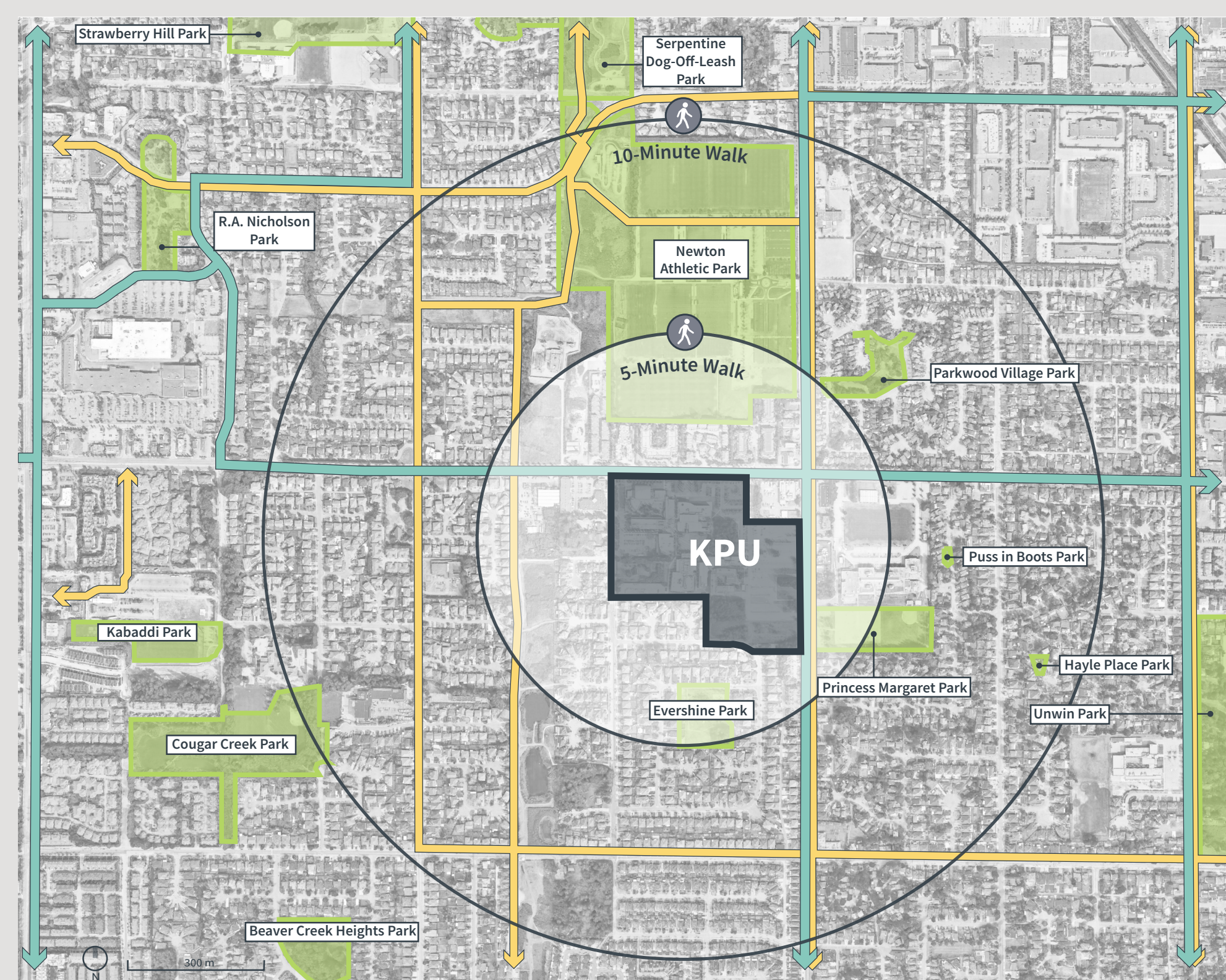
The KPU Surrey campus is a car-oriented campus with large surface parking lots and easy connections to arterial roads.

Transit

There are a number of Translink bus stops within a five-minute walk of the campus. These buses connect to Brighthouse Skytrain Station, Newton Exchange, Scott Road Skytrain Station and Surrey Central Skytrain Station. The KPU Shuttle connects the Surrey campus with the Langley and Tech campuses. Because the KPU Shuttle does not extend to Richmond, the bus route connecting to Brighthouse station is integral for non-driving students and employees traveling between the Richmond and Surrey campuses.

Cycling

The Surrey campus is well-served by north-south cycling connections along 124 and 128 streets. However, no east-west cycling routes connect to the campus.

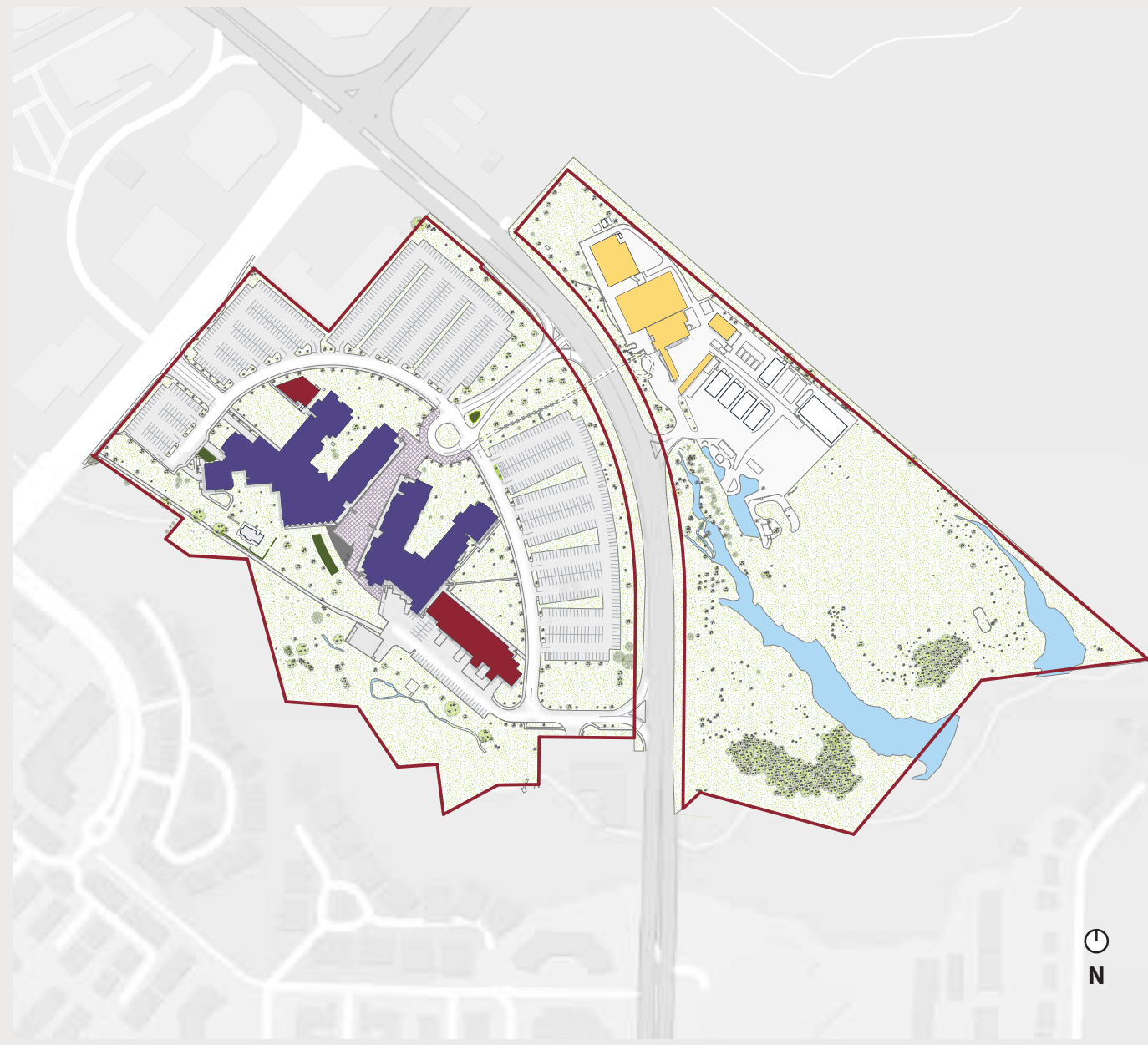


- Legend**
- Park
 - KPU Surrey
 - Walking Radius from Main Campus Building
 - Transit Routes
 - Cycling Routes

CONTEXT | KPU LANGLEY

BUILDINGS

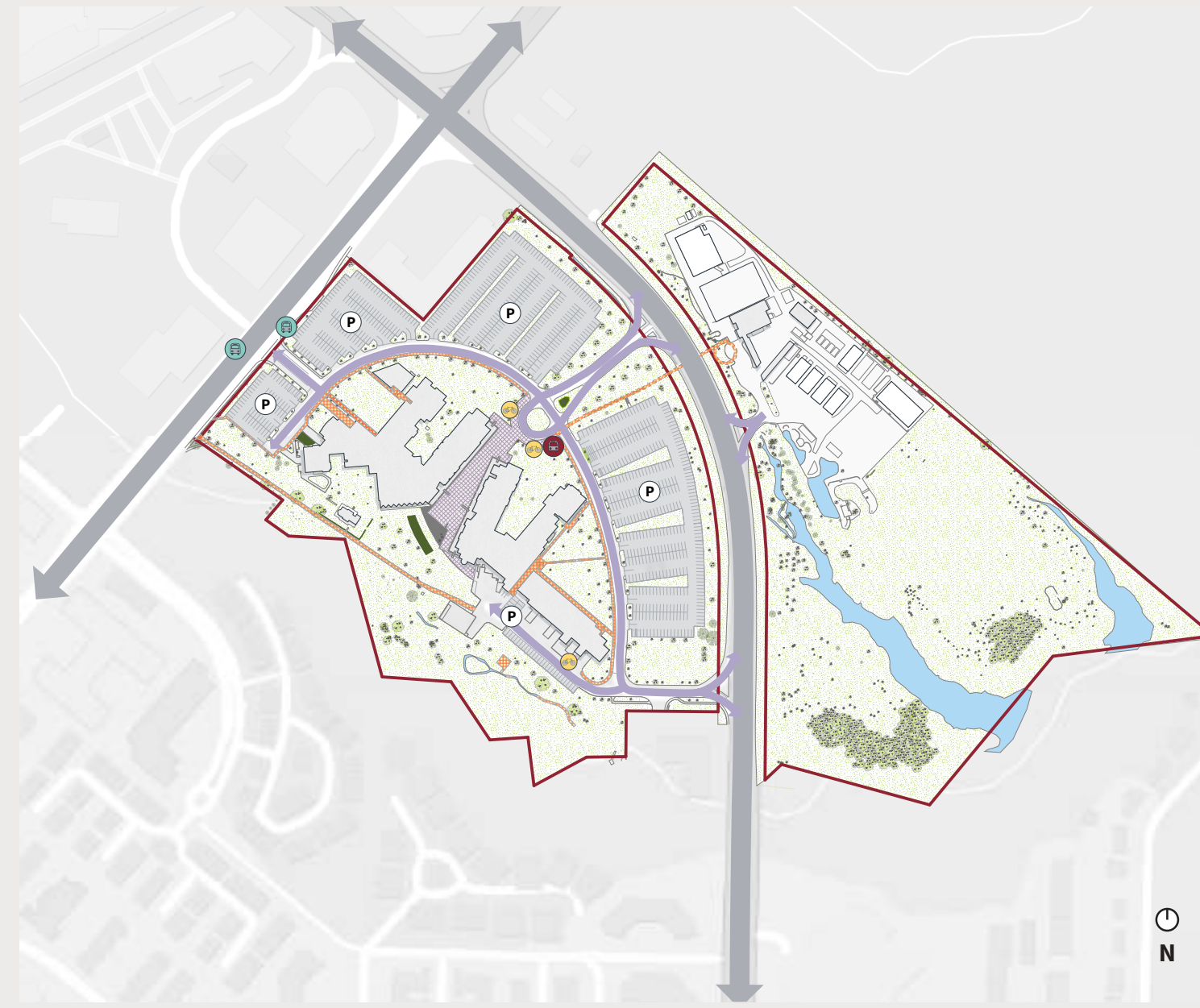
The Langley campus is split into two parcels. The southwest parcel contains most of the campus' academic, office and social spaces. The northeast parcel is comprised of greenhouses, classrooms and outdoor learning spaces used by KPU's Faculty of Science and Horticulture.



- Legend**
- Classroom + Training
 - Multipurpose
 - Research Facility
 - Property Line

MOBILITY NETWORKS

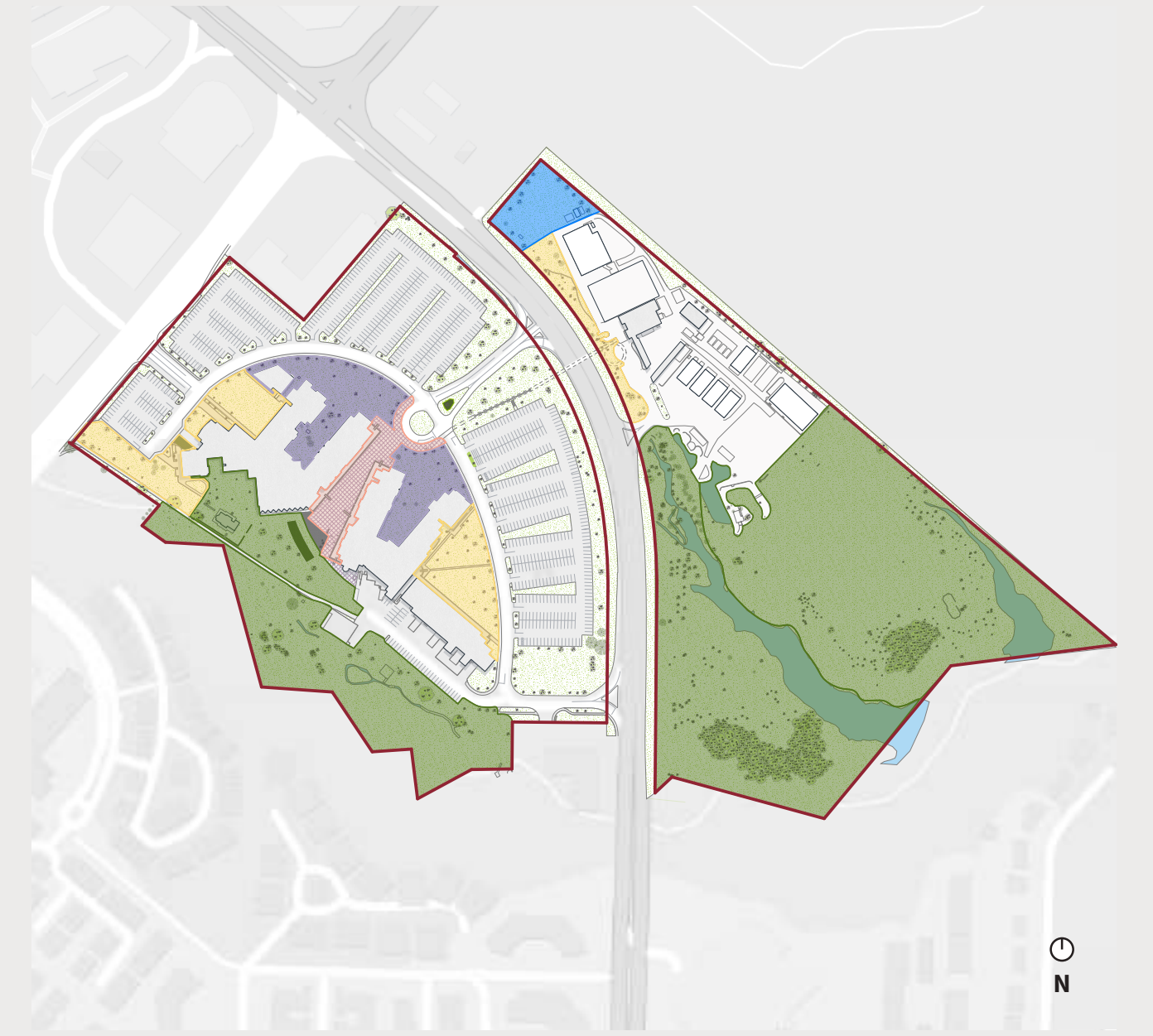
There are two Translink transit stops located adjacent to the campus as well as a stop for the KPU shuttle. There are multiple bike storage areas on campus, including the KSA's secure bike lockers. There is a cycling route along Glover Rd. Paved pedestrian paths are depicted below.



- Legend**
- Pedestrian Path
 - KPU Shuttle Stop
 - Translink Stop
 - Bike Storage
 - Car Share Parking
 - Parking
 - Campus Road
 - Local Road
 - Arterial Road

OPEN SPACE

KPU Langley has the most open green spaces and naturalized areas of KPU's campuses. Much of the open space on campus is used by surface parking. The central campus courtyard is the most used outdoor open space.

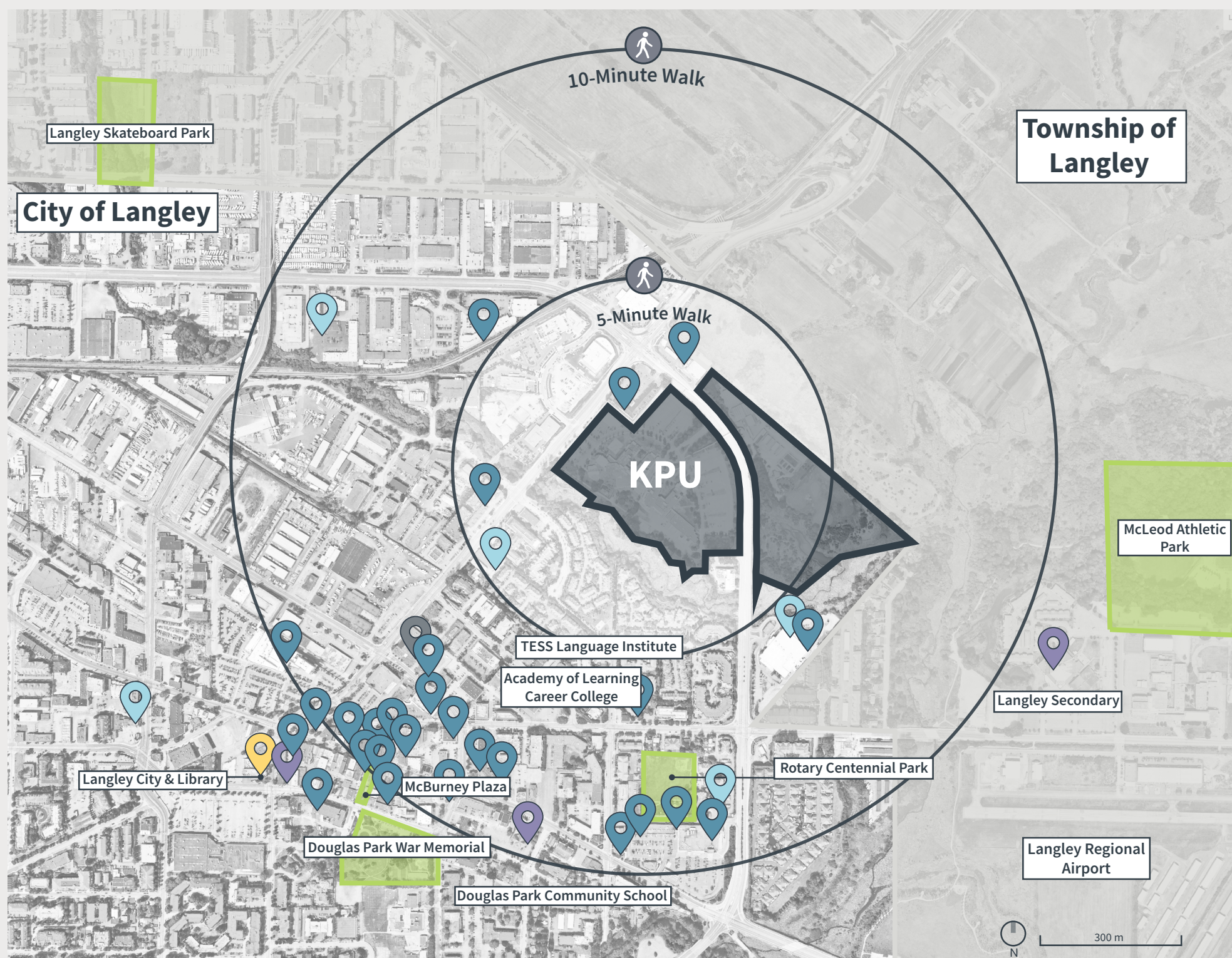


- Legend**
- Entry Landscape
 - Campus Courtyard
 - Property Line
 - Community Garden
 - Naturalized Area

SURROUNDING USES

Most of the properties surrounding the campus have a mixture of low to medium density residential and commercial uses. Along the southern edge of the campus is a strip of green space designated by the City of Langley as P1 (Public Institutional/Recreation Zone) that has a water course running through it. Beyond the northeast campus boundary is the Township of Langley and Agricultural Land Reserve (ALR) land.

Adjacent to the campus, at the intersection of the Langley Bypass and Glover Rd is the Best Western Plus Langley Inn. The property adjacent to the southern corner of the campus is an integrated non-profit social care and teaching facility called Salvation Army Gateway of Hope. The residents of the Best Western and Gateway of Hope have a regular presence on campus.



- Legend**
- Park
 - KPU Langley
 - Walking Radius from Main Campus Building
 - Religious & Spiritual
 - Education
 - Civic
 - Childhood Education
 - Cultural Spaces
 - Food Services

MOBILITY CONNECTIONS

Vehicles

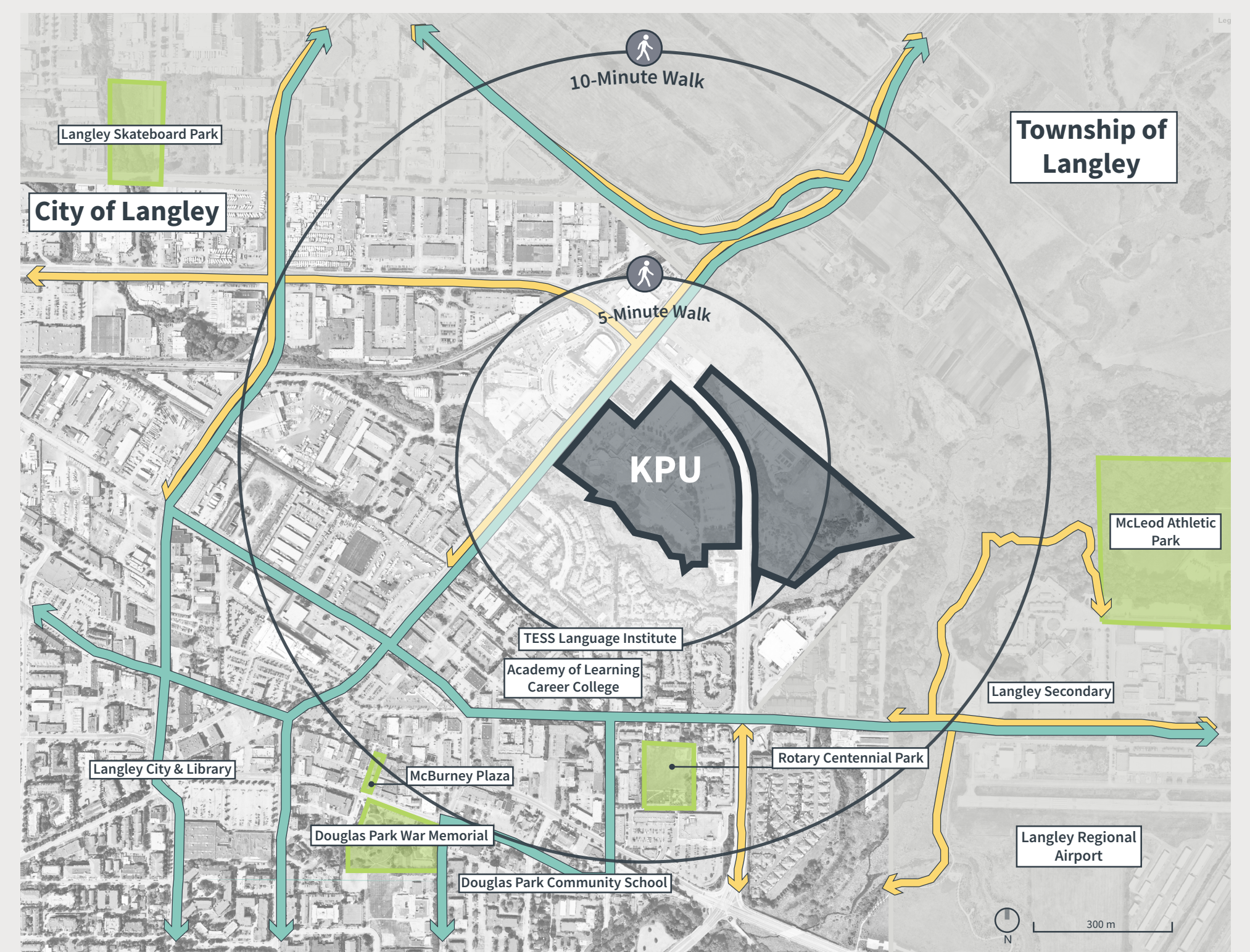
The Langley campus is bisected by the Langley Bypass, a heavily used arterial road. The campus is car-oriented with large surface parking lots.

Transit

Translink has two bus routes that run close to the campus and connect it with Clayton Heights, Langley Centre, and Walnut Grove.

Cycling

There is one cycling route that is connected to the campus; it runs along Glover Rd.



- Legend**
- Park
 - KPU Langley
 - Walking Radius from Main Campus Building
 - Transit Routes
 - Cycling Routes

CONTEXT | KPU RICHMOND

BUILDINGS

The Main building hosts the cafeteria, bookstore, administrative services, library, offices and classrooms.

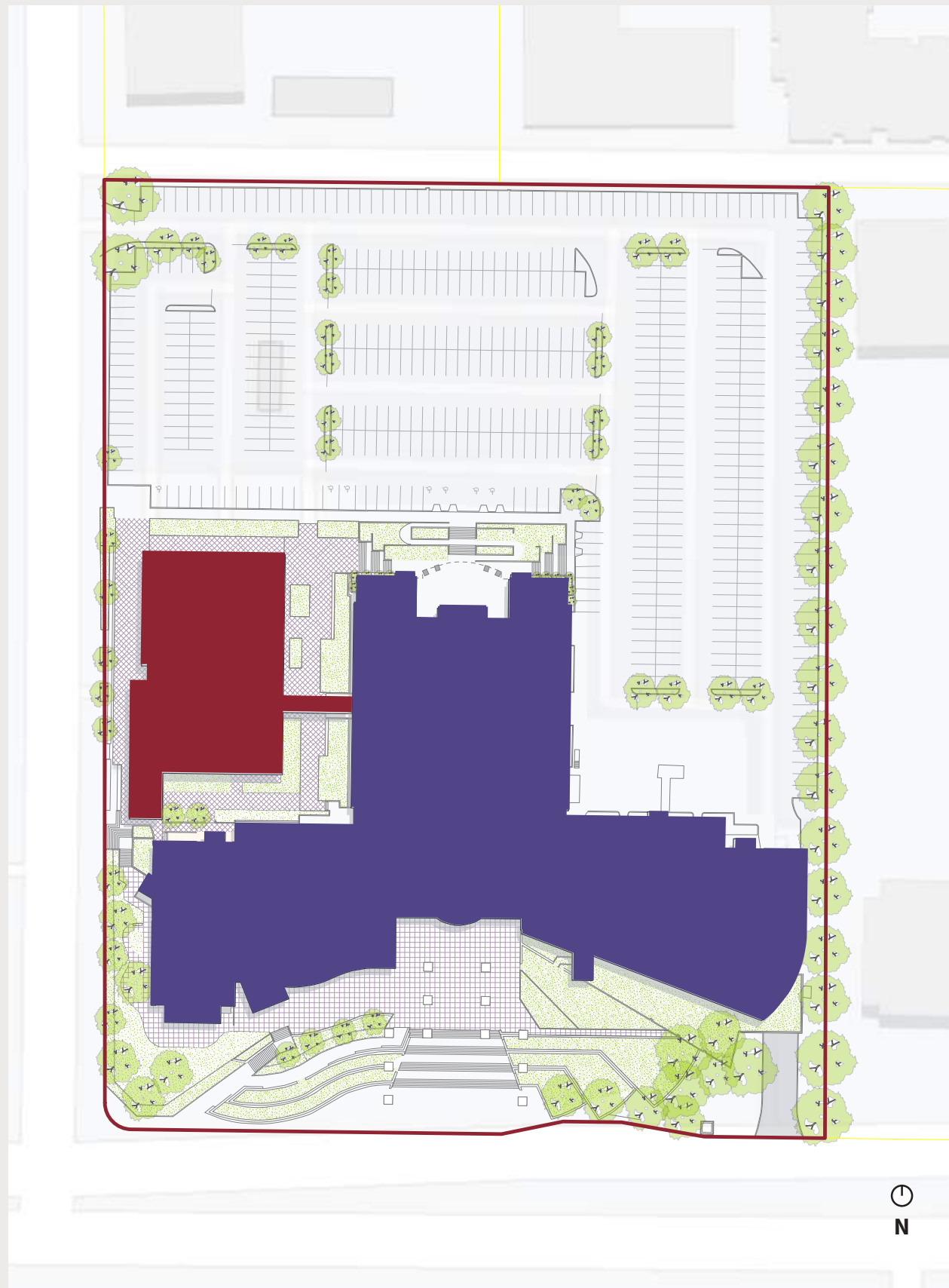
The KPU Chip & Shannon Wilson School of Design is KPU's newest building, completed in 2017. It offers specialized classrooms for teaching fashion, graphic, interdisciplinary interior, and product design.

MOBILITY NETWORKS

There are three Translink transit stops immediately adjacent to the campus as well as a Skytrain Station within a 10 minute walk. There are multiple bike storage areas on campus, including the KSA's secure bike lockers. No cycling routes directly connect to the campus. Paved pedestrian pathways are depicted below.

OPEN SPACE

KPU Richmond's open space is dominated by surface parking. The Main building has two stepped entry plazas to demarcate building entrances and garden beds along outdoor walkways. The raised garden is the most used outdoor open space.



- Legend**
- Classroom + Training
 - Multipurpose
 - Property Line



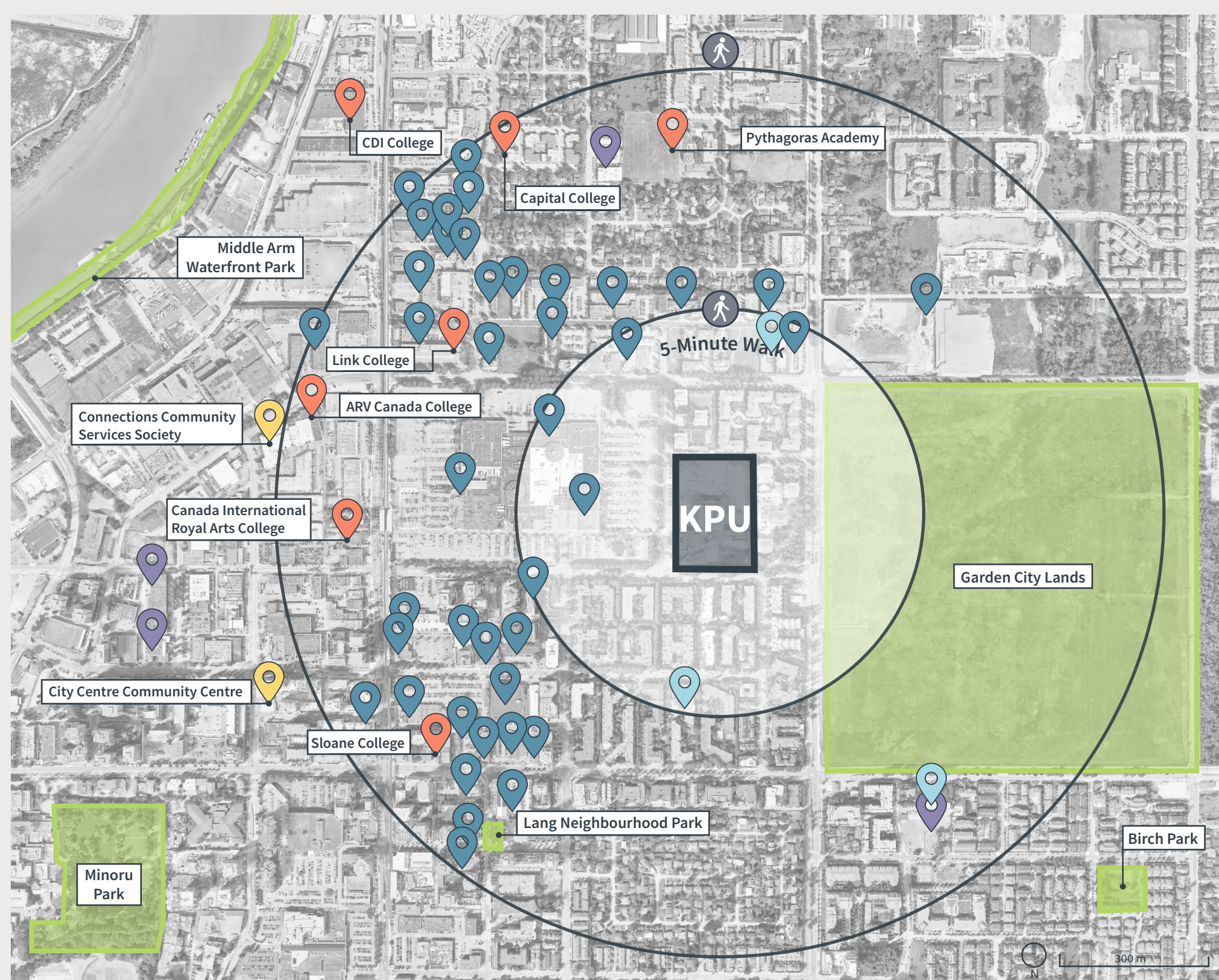
- Legend**
- Pedestrian Path
 - KPU Shuttle Stop
 - Translink Stop
 - Underground Bike Storage
 - Aboveground Bike Storage
 - Car Share Parking
 - Parking
 - Campus Road
 - Local Road
 - Arterial Road



- Legend**
- Main Entry Plaza
 - Wilson Entry Plaza
 - Northern Entry
 - Raised Garden
 - Outdoor Walkway
 - Property Line

SURROUNDING USES

The properties surrounding the campus are occupied by a mix of commercial and medium density residential uses. Just east of the campus are the Garden City Lands. They are dedicated for agricultural use, and presently the Sustainable Agriculture and Food Systems uses this area for research and demonstration projects. To the west of the campus, across Kwantlen Street, is Lansdowne Mall, which is currently in the design phase of a mixed-use development. A number of food amenities are available along No. 3 road, about a 10-15 minute walk away from the campus.



- Legend**
- Park
 - KPU Richmond
 - Walking Radius from Main Campus Building
 - Civic
 - Childhood Education
 - Cultural Spaces
 - Religious & Spiritual
 - Education
 - Food Services

MOBILITY CONNECTIONS

Vehicles

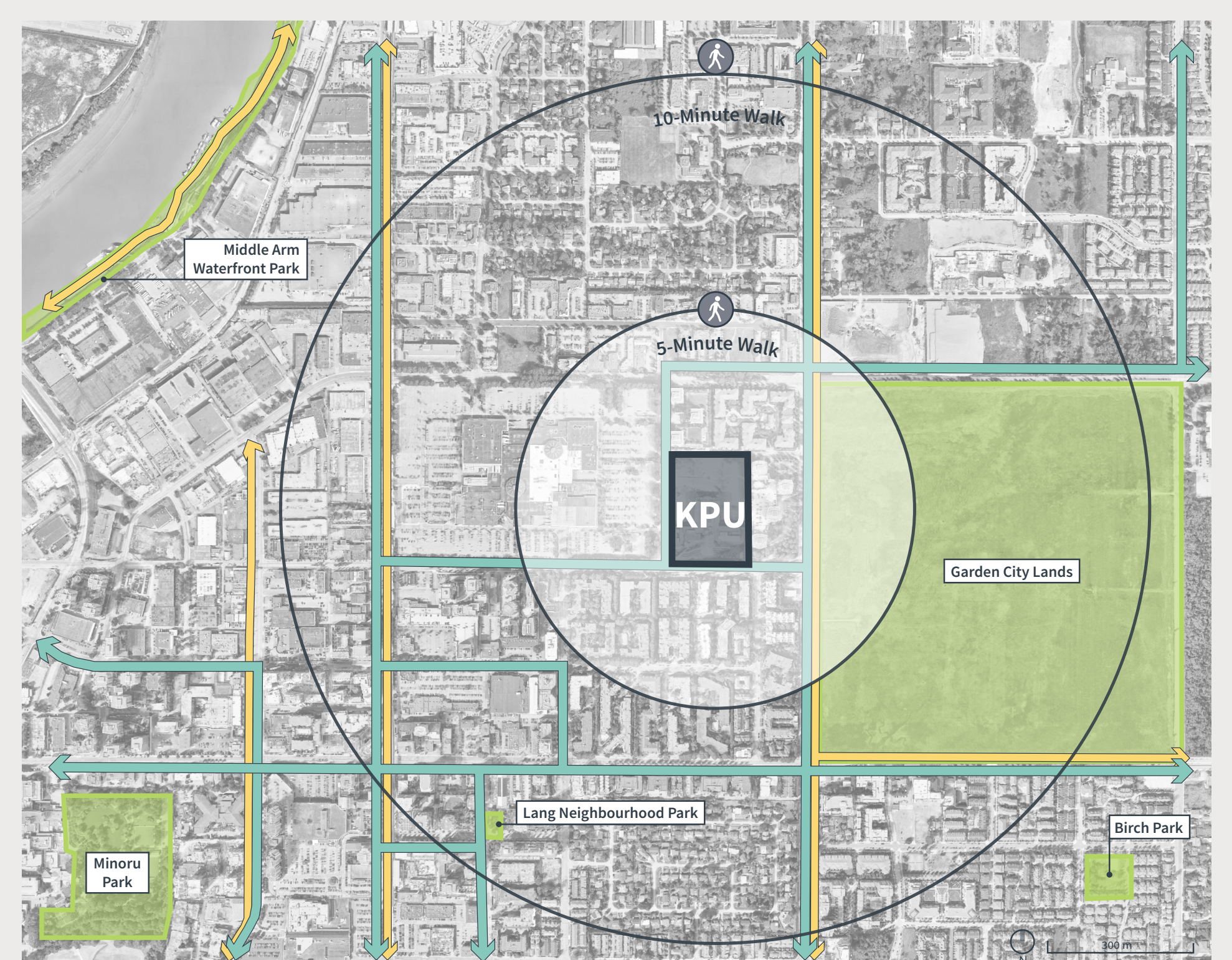
The Richmond campus is in close proximity to Alderbridge Way, a major arterial route.

Transit

KPU Richmond is the only campus within walking distance of a Skytrain station, making this one of KPU's most transit-friendly campuses. Three Translink buses have stops within walking distance of the campus.

Cycling

There are cycling routes close to the campus along the No.3 and Garden City roads, but no cycling routes directly connect to the Richmond campus.



- Legend**
- Park
 - KPU
 - Walking Radius from Main Campus Building
 - Transit Routes
 - Cycling Routes

WHAT WOULD YOU LIKE TO SEE ON KPU'S CAMPUSES?

WHAT RESONATES WITH YOU?
MARK IT WITH A DOT: ●



Outdoor activities



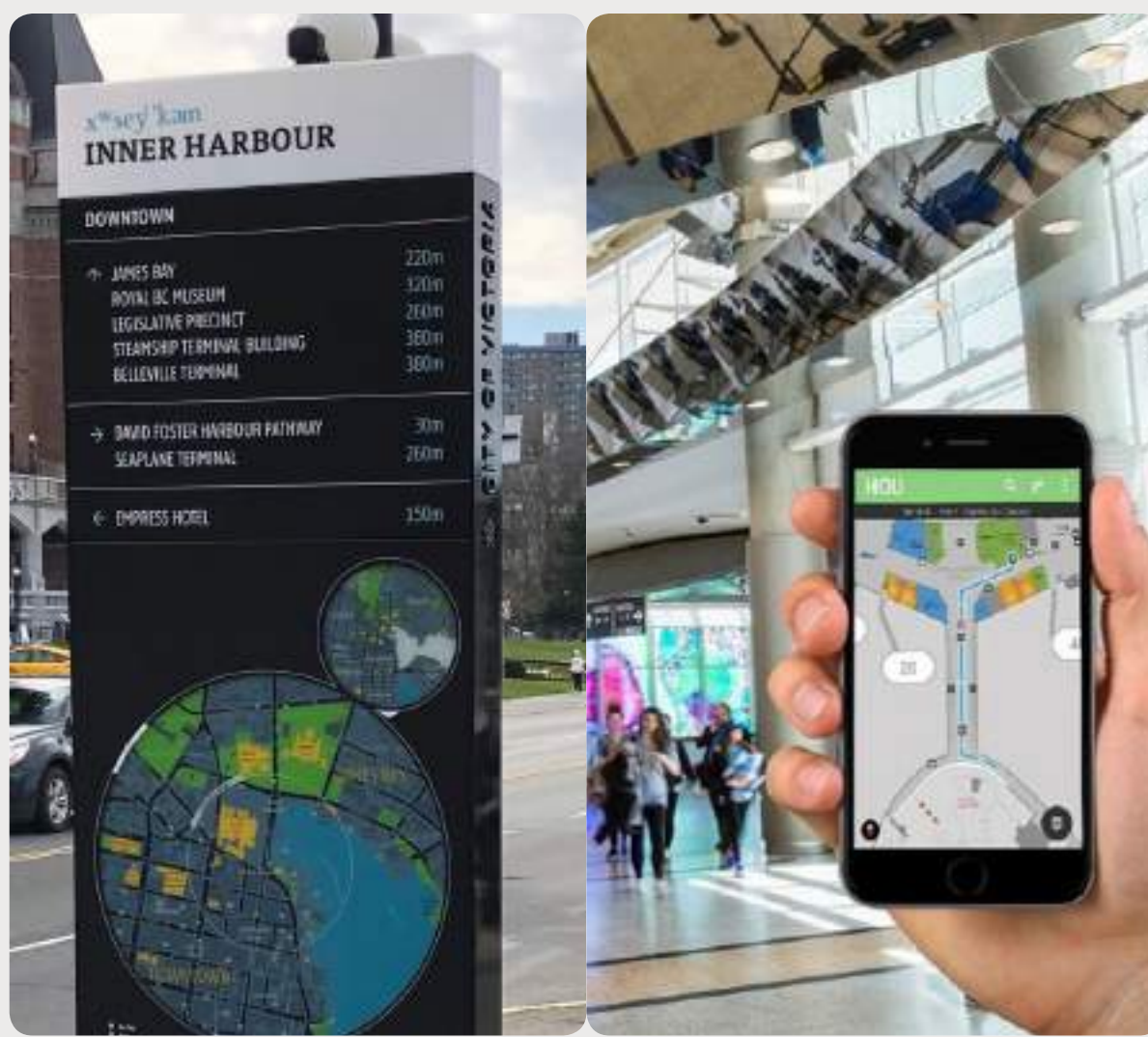
Sacred spaces / ceremonial spaces



Bringing natural landscapes into the heart of campus



Places to live / residential options



Improved wayfinding



Partnerships and shared spaces



Net Zero campus: architecture and landscape



High quality buildings that define identity of place



Innovation space or buildings (simulation?)



Learning environments outside the classroom / campus as a living lab



Community ancillary services

Your ideas here!

Other Ideas?

Post a note here with your ideas

WHAT WOULD YOU LIKE TO SEE ON KPU'S CAMPUSES?

WHAT RESONATES WITH YOU?
MARK IT WITH A DOT: ●



Gathering spaces with seating: plazas, courtyards, forecourts



Places for contemplation, sunbathing, relaxing



Large outdoor event space



Transparent and animated internal gathering spaces



Adaptable and flexible event spaces, for art, creativity, exhibitions, etc.



Informal spaces, for learning or lounging



A connected and safe walking environment



Transit amenities and connections



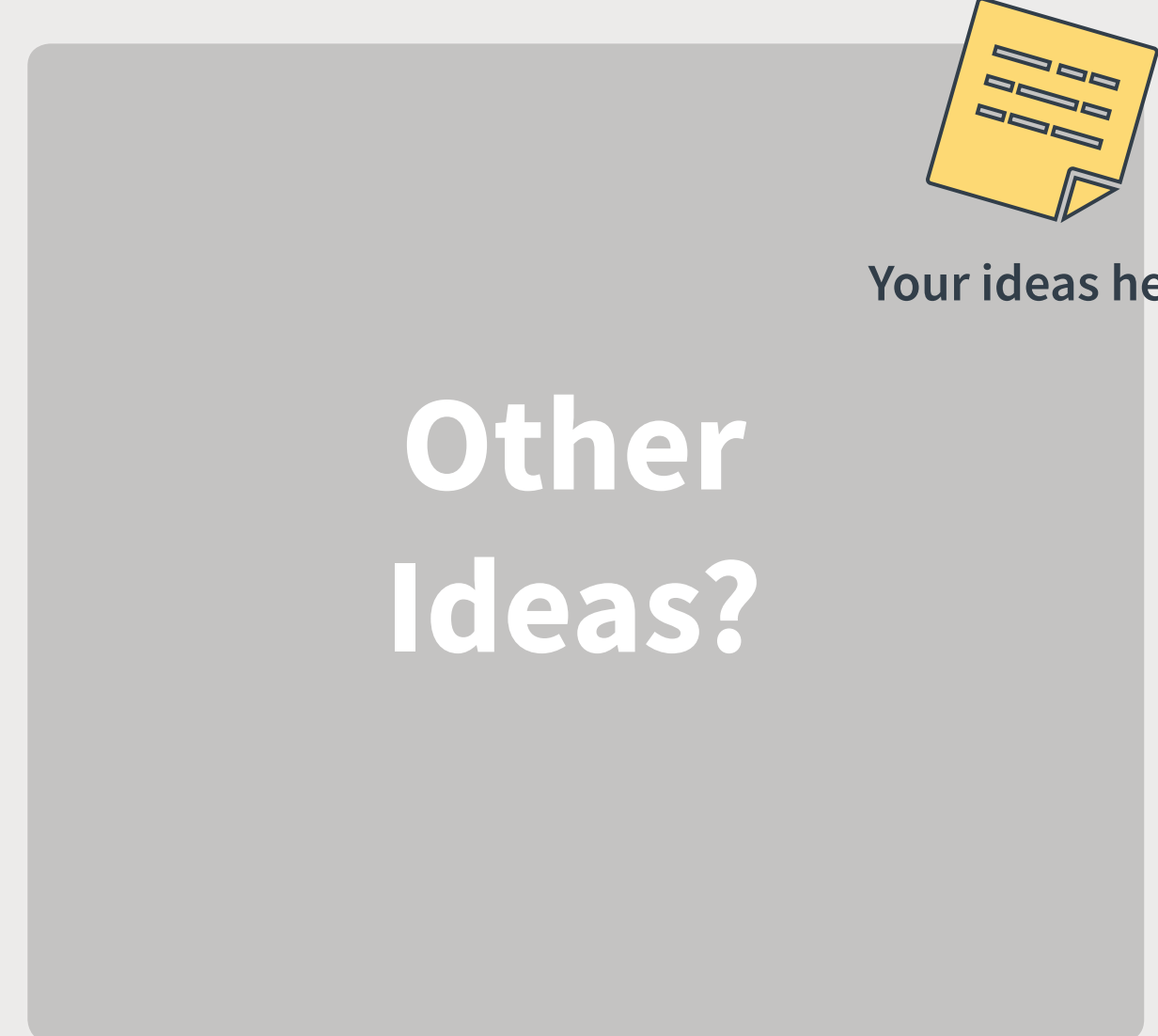
Bikeshare programs and amenities



Outdoor recreational spaces



Indoor sports/gym facilities



Post a note here with your ideas

KPU LOCATIONS

Richmond Campus

Garden City Lands Teaching & Research Farm

KPU Orchard

TFN Farm School

Civic Plaza Campus

Surrey Campus

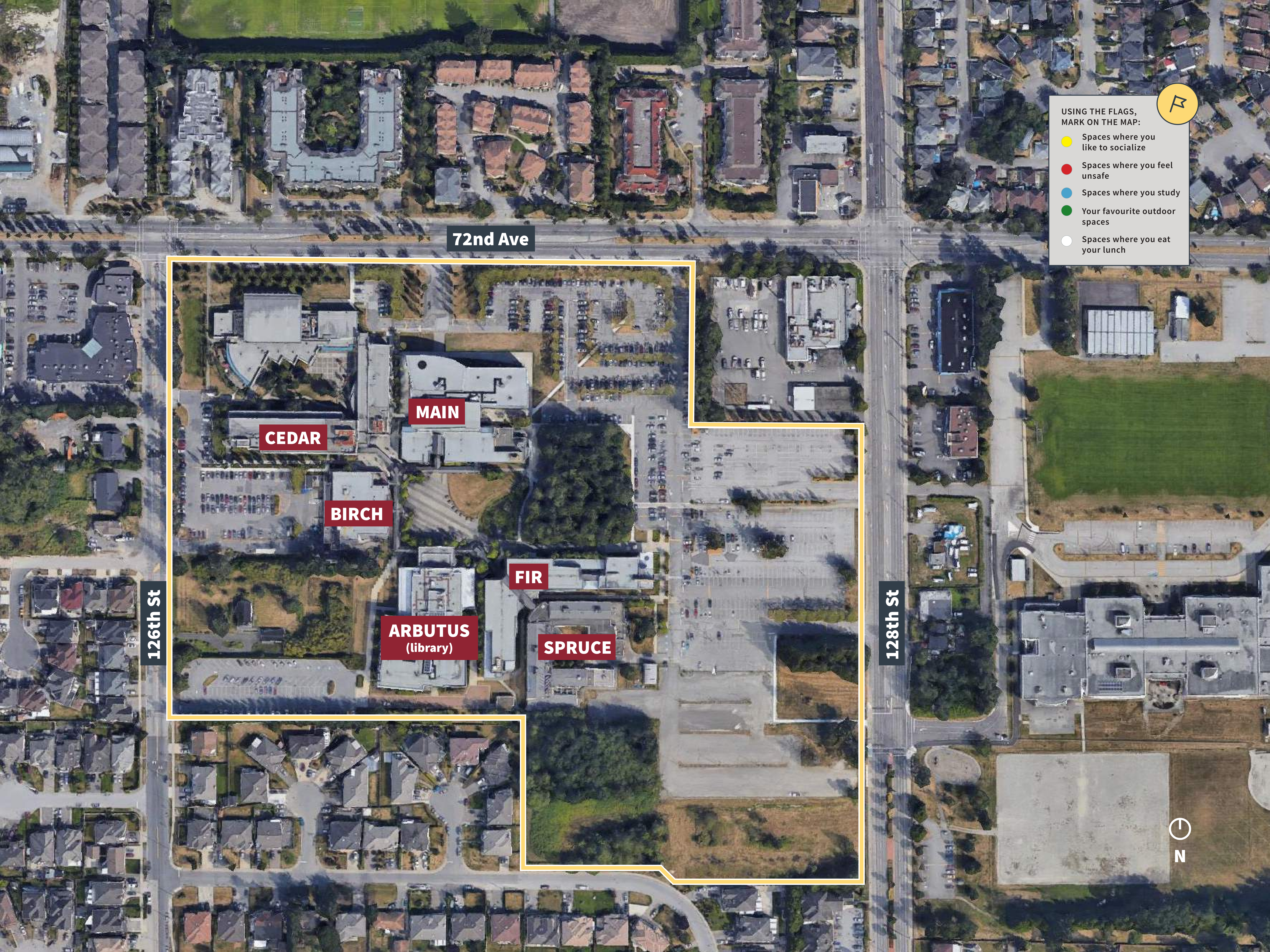
Tech Campus

Langley Campus

IN PLANNING FOR THE FUTURE OF KPU, WHAT DO YOU THINK SHOULD BE CONSIDERED FROM A NEIGHBOURHOOD OR REGIONAL CONTEXT?



Your ideas here!



72nd Ave

126th St

128th St

CEDAR

MAIN

BIRCH

FIR

ARBUTUS
(library)

SPRUCE

USING THE FLAGS,
MARK ON THE MAP:

- Spaces where you like to socialize
- Spaces where you feel unsafe
- Spaces where you study
- Your favourite outdoor spaces
- Spaces where you eat your lunch





- USING THE FLAGS, MARK ON THE MAP:**
- Spaces where you like to socialize
 - Spaces where you feel unsafe
 - Spaces where you study
 - Your favourite outdoor spaces
 - Spaces where you eat your lunch



Glover Rd

BREW LAB

WEST

HEADER HOUSE

EAST

SOUTH

Langley Bypass





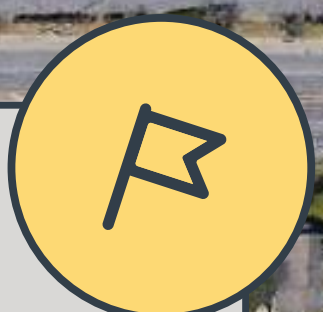
56 Ave

180 St

55 Ave

USING THE FLAGS,
MARK ON THE MAP:

- Spaces where you like to socialize
- Spaces where you feel unsafe
- Spaces where you study
- Your favourite outdoor spaces
- Spaces where you eat your lunch



300 m



- USING THE FLAGS, MARK ON THE MAP:**
- Spaces where you like to socialize
 - Spaces where you feel unsafe
 - Spaces where you study
 - Your favourite outdoor spaces
 - Spaces where you eat your lunch



**WILSON
SCHOOL
OF
DESIGN**

Kwantlen St

Lansdowne Rd

Garden City Rd



WHAT I VALUE MOST ABOUT KPU IS

MY BIG IDEA FOR KPU IS