



# Teaching & Learning Commons

# NEWSLETTER



November - December 2022



## A MESSAGE FROM DR. LEEANN WADDINGTON

ASSOCIATE VICE PRESIDENT, TEACHING & LEARNING, PRO TEM

As the fall semester comes to a close and we begin to ponder the possibilities for 2023, I am eager to involve faculty in our work. Our learning technology advisory group began last spring and has space for new members. If you are interested in providing input, beta testing new tools and bringing forward the needs of your area, please reach out. We have a couple new initiatives starting in Spring with 6 ePortfolio champions and a single course release for

Spring and 3 Trauma Informed Teaching experts on time release to help us determine supports in this important area of your work with students. Our team continues to flesh out the scope of our work and a strategic plan toward teaching excellence. We have identified seven pillars that define our work and the values we bring to that work that we believe serve as a foundation for accomplishing it. I welcome feedback on this or opportunities to visit your departments to discuss your specific needs. I would also encourage everyone to complete the TL, Research and Library survey by January 22, 2023. Your input helps each of our areas design supports that meet your needs. An email to fill out this survey will be sent on December 8th.

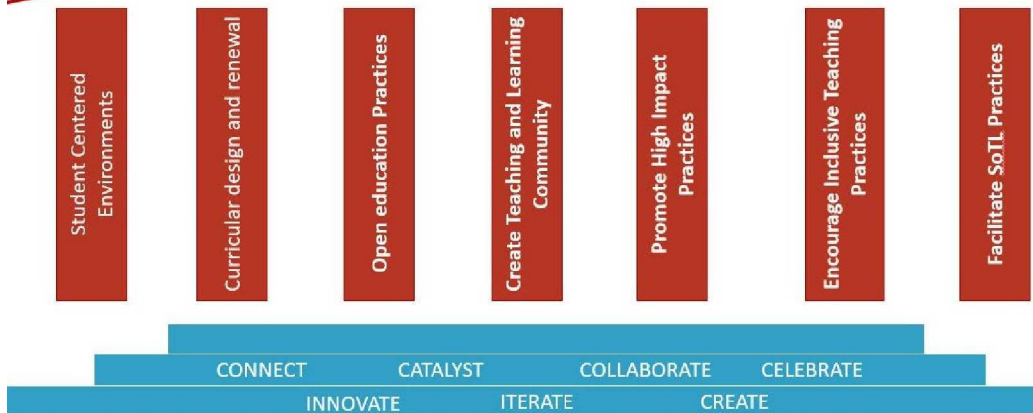
Finally, and most importantly, I wish all of you and your families a restful winter break. May you celebrate and rejuvenate doing whatever makes you happy! Myself and the team in Teaching and Learning are grateful to partner with you and wish you all the best in 2023!

*L. Waddington*

### T&L Commons Mission Statement

Pedagogical leadership that is grounded in ethics, creativity, care and community

### Academic Plan 2023



# learning TECHNOLOGIES

## WORKSHOPS

View our Spring 2023 synchronous workshops [here!](#)

## BACKUP MOODLE COURSE

With the Fall semester coming to a close, we recommend faculty create a backup of any Moodle course they may want to re-use in the future. Instructions for how to create a backup of a course and download it can be found [here](#).

## FINAL REMINDER

Final reminder!: courses.kpu.ca has been retired, replaced by courses.moodle.kpu.ca. For more information, [click here](#).

## IMPORTANT NOTICE

Course shells for Spring 2023 were created with a hidden visibility, which means they are not yet visible to your students. Students love it if this happens a few days before your first class as it helps them prepare. [Click here](#) for steps to open your course visibility. Any courses not opened by first day of class will be opened automatically.

## PADLET

Learning Technology integrated a brand new tool called Padlet to the T&L ecosystem and is searching for pilot users to test the tool before it is launched.

Padlet is a versatile, collaborative notice board that can be shared within your class. Padlet allows for both you and your students to upload and share media, comments and files in real-time to accommodate a number of different activity types. Padlet can be embedded on a Moodle course to allow for content to be displayed directly on for ease of access to the platform and visibility. If you are interested in participating in the pilot please reach out to [tcommons@kpu.ca](mailto:tcommons@kpu.ca) for more information.

# team UPDATES

- Samuel Kirk, Teaching & Learning Strategist, joined the team on December 5th.
- Tina Diu, Learning Technology Junior Support Analyst, joined us on December 12th.
- A huge thank you and farewell to Open Education Strategist, Urooj Nizami as she embarks on new opportunities in her career.

# BASIC STUDENT SUPPORTS

University is challenging. Fortunately, at KPU, there are resources that can help students be successful. KPU has a full range of services and departments that students can access when they need support or assistance. To find more information on how to access these services, go to [kpu.ca/current-students](https://kpu.ca/current-students)



## Health & Wellness

Health and wellness is an integral part of succeeding in university. KPU provides all students with access to a wealth of resources and information spanning across the six dimensions of wellness, including emotional, financial, mental, physical, social, and spiritual wellness: [kpu.ca/thrive](https://kpu.ca/thrive)



## Financial Hardship

Emergency bursaries are available to any student experiencing an unexpected financial hardship. These bursaries provide a limited amount of financial assistance to students based on assessed financial need and do not need to be repaid: [kpu.ca/awards/emergency-assistance](https://kpu.ca/awards/emergency-assistance)

International students may also be eligible for limited financial assistance from the KPU International Emergency Fund. For information, email [internationalstudents@kpu.ca](mailto:internationalstudents@kpu.ca)



## Counselling Services

KPU's Counselling Services provides individualized and confidential counselling support to students on a wide range of challenges, including adjusting to university life, stress management, grief, anxiety, relationships, family, and any other mental health challenges: [kpu.ca/counselling](https://kpu.ca/counselling)

Connect 24/7 through the MySSP App to get personalized support: [kpu.ca/keepmesafe](https://kpu.ca/keepmesafe)



## Accessibility

If students are experiencing challenges related to health (mental or physical) or they have learning disabilities that are impacting their studies, KPU's Accessibility Services will work with students to confidentially develop a personalized plan to ensure access to the University and to support them in achieving their academic goals: [kpu.ca/access](https://kpu.ca/access)



## Food Insecurity

Any student having difficulty affording groceries or accessing sufficient food to eat every day can access the Kwantlen Student Association's Student Food Bank service. Students can confidentially order a food hamper online or make emergency food requests: [kusa.ca/ksa-food-bank](https://kusa.ca/ksa-food-bank)

Students are also encouraged to contact Student Awards and Financial Assistance at [awards@kpu.ca](mailto:awards@kpu.ca) or by visiting their website at [kpu.ca/awards](https://kpu.ca/awards)

# *funding/time release* RECIPIENTS

We are excited to announce the recipients of time releases awarded to the following faculty on two important initiatives championed by the Commons: Trauma Informed Teaching and ePortfolios. We look forward to working with the recipients to advance teaching innovation. Read more about them [here!](#)

# *open* EDUCATION

In September, KPU CPS launched the [Professional Program in Open Education](#) (PPOE). Teaching & Learning and Open Education helped design the courses which are being delivered by CPS. This online program is designed to develop expertise and capacity across a broad spectrum of open educational practices, including open educational resources and pedagogies, educational technologies, policy, advocacy, and scholarship.

PPOE was a proud sponsor of the 2022 [Open Education Global Conference](#).

In 2022, KPU Faculty published 7 new open textbooks! Find them in the [KPU Pressbooks Catalog](#).

8 OER Grants were awarded this year. The application deadline for our next round of funding (April 2023 – March 2024) is January 13, 2023.

This year we had 2 [UN SDG Open Pedagogy Faculty Fellows](#): Christine Thuring (working on Goal 13: Climate Action) and Christina Shorthouse (working on Goal 3: Good Health and Well-Being). Fellows partner with faculty from other disciplines and other institutions to create renewable assignments that ask students to think about how their discipline engages with the UN SDGs. Applications for next years Fellowship open in March 2023.

COMING  
UP IN  
2023

New ZTC designation process – previously, we have been sending out a webform to faculty who are teaching in the upcoming semester. However, faculty who have historically taught a course as ZTC will no longer be asked to fill out the webform for that course. Additionally, we will be delaying the start of this process by a few weeks in order to give faculty more time to receive their assignments.

Open Education Week is March 6-10! We've got a lot planned so keep an eye on your Today@ inboxes or sign up for the KPU [Open listserv](#) to make sure you don't miss anything.

OPEN  
TEACHING  
AND  
LEARNING  
SCHEMATA



# FACULTY SPOTLIGHT

## PAOLA GAVILANEZ

BY ANDREA VOTTO

*Wilson School of Design Instructor, Paola Gavilanez, recently spoke to me about moving from Ecuador to Canada, her teaching philosophies, her passion for interior design, and the benefits of using ePortfolios in courses.*

### Why interior design?

"It was always an interest," Paola begins. "Growing up, I was always doing things with my hands," such as making houses out of cardboard boxes for her Barbies. "Instead of playing with the Barbies, I would do staging and not touch it." This isn't surprising to learn. Paola's father and aunt were architects, another aunt an interior designer, and her mother had a keen eye for design. Paola carried this passion into school, taking ceramics, weaving, and drawing. "I wanted something that was close to touch, to feel to the human experience."

### Moving to Canada

Raised in Ecuador, Paola lived there until she was 27 when she decided to make a bold move and move up to the west coast. She landed in BC in September. The blustery winds and cold, pelting rains were a stark contrast from the extreme heat in Ecuador. But Paola was determined to make a life for herself and her family here, so the bleak weather adjustment was the least of her worries. She humbly accepted a job for \$12 an hour with a commute of an hour and a half both ways, working part-time in a showroom. Over the years, Paola's passionate personality, determination and hard work paid off, eventually working her way into roles as faculty at KPU as well as working in the interior design industry as a registered designer.

### Teaching Philosophies

Being a teacher is not a role Paola takes for granted, as shown when describing her teaching philosophies.

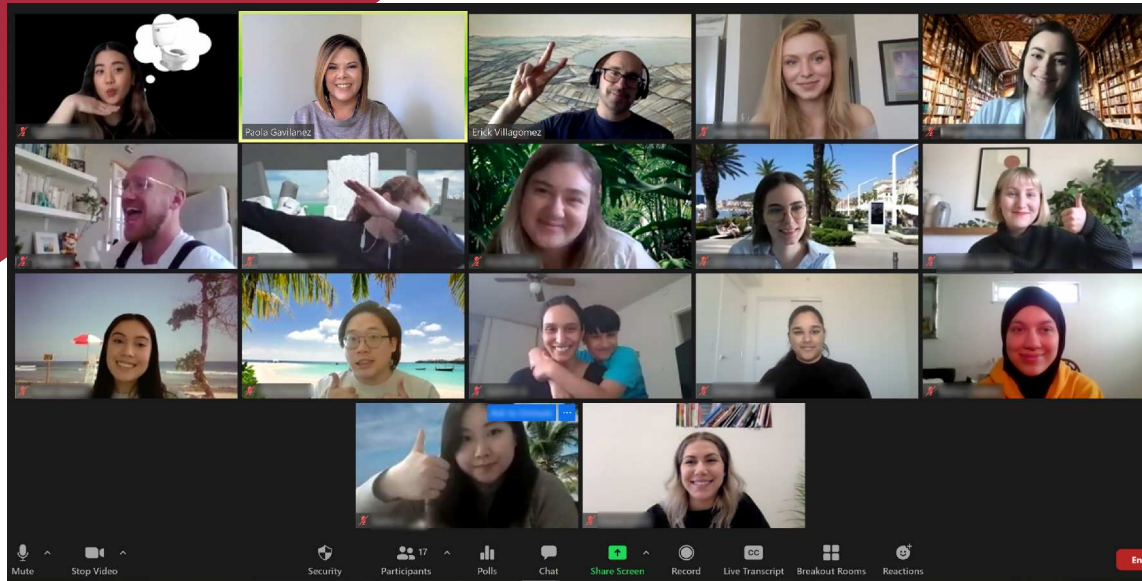
**Design philosophy:** It stems from a powerful emotional response people have to design, especially in nature. She shares, "I believe that continued study of the principles and elements of design as they exist in our environment can serve not only as inspiration for design solution, but as a benchmark of quality."

**Teaching philosophy:** "My teaching philosophy grows from the deep respect I have for students. I feel privileged and honored to join them as they journey in the discovery of a design process to call their own, there being many solutions for every problem. I see myself as a mentor, not a professor. I don't profess, I nudge, I mentor. That's my favourite part of teaching, is the ability to mentor as opposed to telling people what to do."

Paola's personal experience of emigrating from Ecuador to Canada helps her sympathize with international students, and any student who might be struggling for any reason. Her supportive approach encourages students to thrive.



Barcelona field school



## ePortfolios

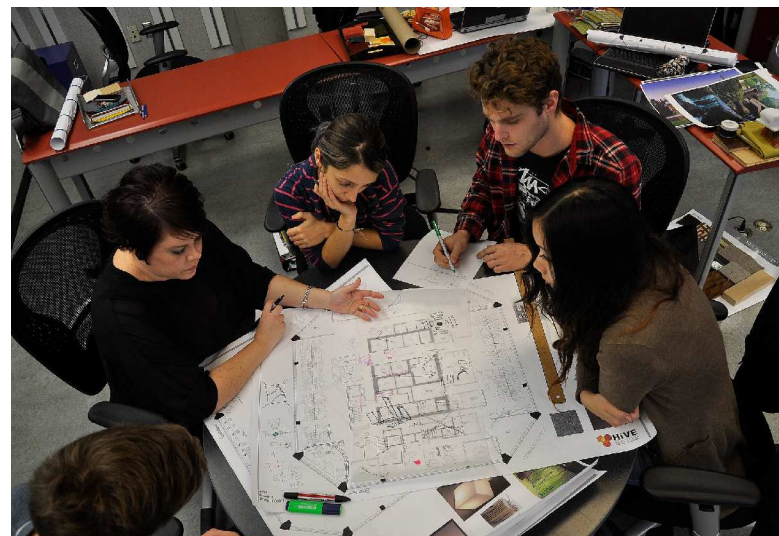
Not only is Paola an engaged teacher (mentor), she is committed to providing high impact courses to her students. This started with a time release last year, where she explored the potential for ePortfolio use in the Wilson School of Design. The result was a series showcasing graduate portfolios, which would be worked on by students through the entirety of their programs. This approach to using ePortfolios would “document soft skills, team skills, leadership skills, things not obvious in final showcase portfolios” that show end result projects. She wants students to show the “messy stuff” that got them to the beautifully presented, finalized projects.

Paola was so intrigued by the benefits that ePortfolios provide to students that she teamed up with Teaching & Learning Commons Educational Consultant, Gillian Sudlow, to dig a little deeper. Together, they have been hard at work meeting with and explaining to faculty how easy PebblePad (the software used to generate ePortfolios) is to use, not only for faculty but also for students. This reduces the stress that faculty can sometimes feel when continually being faced with pressure to learn new software.

In addition to presenting to faculty, Paola and Gillian are also working on an ePortfolio skeleton. This could be used as a template by faculty in various departments, further diminishing the stress of feeling like they have to create something from scratch. This template would be used through students’ four year programs, the end of which would leave them with a full package of their progression through school, showing the mess of exploring new ideas, mistakes and lessons learned, as well as the polished, finished projects.

I asked Paola how much time she spends teaching students how to use PebblePad. Surely instructors would not be enthusiastic to adopt this new platform into their coursework if they’re also taking on the burden of teaching students how to use it, and answering the numerous questions that will arise. Paola assured me she has not spent time teaching anyone, faculty or students, how to use PebblePad. It is user friendly, and by clicking around, the user can naturally figure out how to navigate the interface.

You can watch Paola and Gillian’s [Partner Spotlight presentation](#), which was part of The Teaching & Learning Commons’ recent event, [Appreciating Teaching Excellence!](#) Mark your calendars for round two, being held March 16th, 2023!



KPU Studio desk critique



# SAVE THE DATE

# MARCH 16, 2023

More information coming soon!



# mission STATEMENT

The Teaching & Learning Commons provides pedagogical leadership that is grounded in community, ethics, creativity, and care.

## FOLLOW ALONG WITH THE T&L COMMONS



[@KPU\\_TLCommons](#)



[Beyond the Chalkboard](#)



[Pedagogy + Practice](#)



Teaching & Learning Commons

