

**WILSON
SCHOOL
OF DESIGN**



Disrupt
**WHAT IS
POSSIBLE**

kpu.ca/design

 [Wilson School of Design](#)

 [@WilsonDesignKPU](#)

 [@WilsonDesignKPU](#)

Ogechukwu Rita Nwokolo
Technical Apparel
Design Grad



Wilson School of Design

"I've been lucky to work on some interesting projects and I've had amazing opportunities so far. I've been surrounded by great instructors and peers at KPU and it's extremely encouraging to be making so many connections."

Eyshr Sahota, Product Design Grad

Undergraduate Programs

If you have an eye for design, a head for business, and a sketchbook full of ideas, the Wilson School of Design is for you. At our new cutting-edge facility, we'll push you to your creative limits to fully prepare you for an exciting, dynamic future in graphic design, fashion design, product design, technical apparel design, fashion marketing, or interior design.

Fashion and Technology R | LI

• Bachelor of Design • Diploma
Fall (September) » Limited Intake » Full-time
English Studies 12 C+ (67%) or equivalent.
Portfolio Review and Interview.

Fashion Marketing R | LI

• Diploma
Fall (September) » Limited Intake » Full-time
English Studies 12 C+ (67%) or equivalent.
Letter of Interest Package. Information
Session.

Foundations in Design R | LI

• Certificate
Fall (September) » Limited Intake » Full-time
English Studies 12 C+ (67%) or equivalent.
Expression of Interest Package.

Graphic Design for Marketing R | LI

• Bachelor of Design
Fall (September) » Limited Intake » Full-time
English Studies 12 C+ (67%) or equivalent.
Portfolio Review and Interview.

Interior Design R | LI

• Bachelor of Interior Design
Fall (September) » Limited Intake » Full-time
English Studies 12 C+ (67%) or equivalent.
Portfolio Review and Interview.

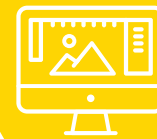
Product Design R | LI

• Bachelor of Design
Fall (September) » Limited Intake » Full-time
English Studies 12 C+ (67%) or equivalent.
Portfolio Review and Interview.

Post-Baccalaureate Programs

Technical Apparel Design R | LI

• Post Baccalaureate Diploma
Fall (September) » Limited Intake » Part-time
English Studies 12 C+ (67%) or equivalent.
Successful completion of a recognized
undergraduate degree, or a design-related
diploma or associate degree along with a
minimum of 5 years of related work experience.
Letter of Interview Session. Interview.



THE ONLY
GRAPHIC
DESIGN FOR
MARKETING
PROGRAM IN
CANADA

BC'S APPAREL
INDUSTRY
GENERATES
\$3.8 BILLION IN
SALES
REVENUE¹¹



IN A RECENT
SURVEY, 94%
OF KPU'S
INTERIOR DESIGN
GRADS WERE
IN THE LABOUR
FORCE AFTER
GRADUATING¹²



¹¹ <https://news.gov.bc.ca/releases/2018AEST0001-000001>

¹² http://outcomes.bcstats.gov.bc.ca/Data/BGSReports/2016_CIP_KPU_50.0408.pdf



KPU Campuses

C Civic Plaza » L Langley » R Richmond » S Surrey
T Tech (Cloverdale) » O Online

Intake Type LI Limited Intake » OI Open Intake

NEED TO UPGRADE?
kpu.ca/aca/acp

WANT TO IMPROVE YOUR ENGLISH?
kpu.ca/aca/els/program-information

For the most up-to-date information about
programs and courses, visit kpu.ca/calendar

**WILSON
SCHOOL
OF DESIGN**

WILSON SCHOOL OF DESIGN



➤ HOW TO APPLY & WHERE TO START kpu.ca/admission

Refer to the Online Admissions Guide about application deadlines, required documentation, and other important information about the admission process.

➤ APPLY NOW kpu.ca/apply

➤ NOT NOW? STILL THINKING? OR JUST WONDERING WHAT WE'RE UP TO?

kpu.ca/design  Wilson School of Design   @WilsonDesignKPU

➤ MORE DETAILS:



Career Path

Our advisors will help you make informed decisions about your educational and career goals.

Academic Advisors
» 604-599-2000
» kpu.ca/advising

ACA Advising
» aca.advisor@kpu.ca

Assessment and Testing
» kpu.ca/testing/how-to



Money

We provide current and prospective KPU students with information on the various types of funding available (e.g. scholarships, awards, student loans, grants etc.).

Student Awards and Financial Assistance

» 604-599-2000 (opt 4)
» awards@kpu.ca
» kpu.ca/awards



More Questions

Have questions about how to apply?
Curious about admission requirements?
Already applied but want more information?

Contact the Future Students' Office

» 604-599-3030
» study@kpu.ca

Our Recruitment Coordinators can provide you with more information about our various programs and help prepare you for admission.

No appointment necessary!
Check our drop-in schedule:

» kpu.ca/futurestudents/events/dropinadvising